

Forté Series 8760 System

Product Definition Subsystem Manual
Stock/Grades System for Bales of Pulp
August 12, 2008
P/N 82-1625

©Copyright 2004
Forté Technology Inc.
125 John Hancock Road
Suite 9
Taunton MA, 02780 U.S.A.
Telephone: (781) 769-9150
E-mail: forte@forte-tec.com
URL: www.forte-tec.com

Rev. B

REVISION HISTORY:

Revision	Date	Author	Description
Rev A	June 1, 2004	MCD	Initial Release, Update of 82-1561
Rev B	August 12, 2008	GM	Updated contact information

TABLE OF CONTENTS

1 STOCKS/GRADES SUBSYSTEM OVERVIEW.....1

2 STOCK SYSTEM: PARAMETERS TAB.....2

3 STOCK SYSTEM: DEFAULTS TAB.....3

4 GRADES SYSTEM WINDOW.....4

5 OPENING THE STOCK SYSTEM WINDOW.....5

6 OPENING THE GRADE SYSTEM WINDOW7

7 COMMON COMPONENTS OF THE STOCK AND GRADE SYSTEM WINDOWS...9

 7.1 STOCK SYSTEM MENU BAR..... 9

 7.2 STOCK OPERATIONS MENU BAR COMMANDS.....9

 7.3 PRINT MENU COMMANDS..... 10

 7.4 SYSTEM LOG COMMAND..... 10

 7.5 LOG FILE “GRADES” WINDOW 11

 7.6 STOCK SYSTEM MAINTENANCE COMMAND MENU 13

 7.7 GRADE MENU COMMAND..... 13

 7.8 USER COMMAND MENU..... 14

 7.9 GRADE SYSTEM MENU BAR 15

 7.10 TABS AND CONTROL BUTTONS..... 16

 7.11 PARAMETERS TAB BOXES 17

 7.12 DEFAULTS TAB BOX 19

 7.13 NAME TEXT BOX 20

 7.14 STOCK/GRADE NAMES LISTVIEW BOX 20

8 FREQUENTLY ASKED QUESTIONS: THE STOCKS/GRADES SUBSYSTEM21

 8.1 HOW DO I ENTER THE STOCKS / GRADES SUBSYSTEM?..... 22

 8.2 HOW DO I VIEW THE PARAMETERS OF AN EXISTING STOCK OR GRADE?...
..... 23

 8.3 HOW DO I CREATE A NEW STOCK? 24

 8.4 HOW DO I CREATE A NEW GRADE?..... 28

 8.5 HOW DO I EDIT A STOCK OR GRADE BY CHANGING THE NAME, OR THE
DATA IN THE PARAMETERS BOX? 29

 8.6 HOW DO I EDIT THE STOCK DEFAULTS BOX?..... 30

 8.7 HOW DO I SET THE GLOBAL DEFAULT STOCK VALUES? 31

 8.8 HOW DO I DELETE AN EXISTING STOCK (OR GRADE)? 32

 8.9 HOW DO I RESTORE A DELETED STOCK (OR GRADE)?..... 33

 8.10 HOW DO I DELETE ALL STOCKS OR GRADES?..... 34

 8.11 HOW DO I PRINT A COPY OF THE STOCK/GRADE DATA FILE?..... 35

 8.12 HOW DO I REVIEW THE STOCK AND GRADES LOG FILE MESSAGES?..... 36

 8.13 HOW DO I MAKE A BACKUP OF THE STOCK / GRADES DATABASE? 39

 8.14 HOW DO I RESTORE STOCK / GRADE DATA?..... 43

 8.15 HOW DO I EXIT THE STOCK / GRADES SUBSYSTEM, SAVING ANY NEW
DATA OR EDITS?..... 46

9 TO CONTACT FORTÉ TECHNOLOGY, INC.:.....47

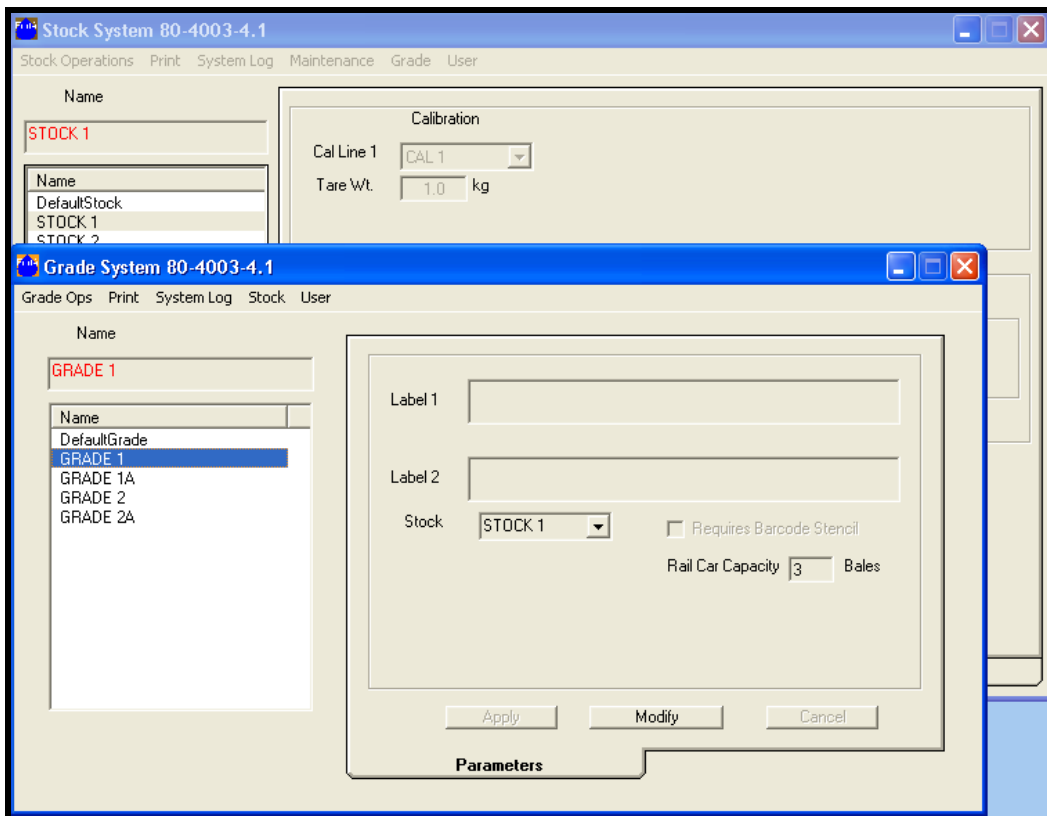
1 STOCKS/GRADES SUBSYSTEM OVERVIEW

The Stocks/ Grades Subsystem is the product identification system in the Forté moisture measurement program. The materials measured by the Forté system may vary in composition, size, shape and weight. The Stocks/Grades Subsystem allows for a unique name and parameters to be assigned to each grade of material. The parameters include assigned calibrations, tare weight, lot size, moisture and weight limits, weight and moisture default values and target weights.

“Stock” is the root description of the basic product type. For example, in a moisture measurement system for bales of pulp “Hardwood” is a common designation for a stock. The Stock System window opens by default when the Stocks/Grades Subsystem is selected.

The different “Grades” that are assigned to a stock are a subset of that stock. Grade names can be used to differentiate product for different customers. The Grades System window is opened from the Stock system menu bar commands.

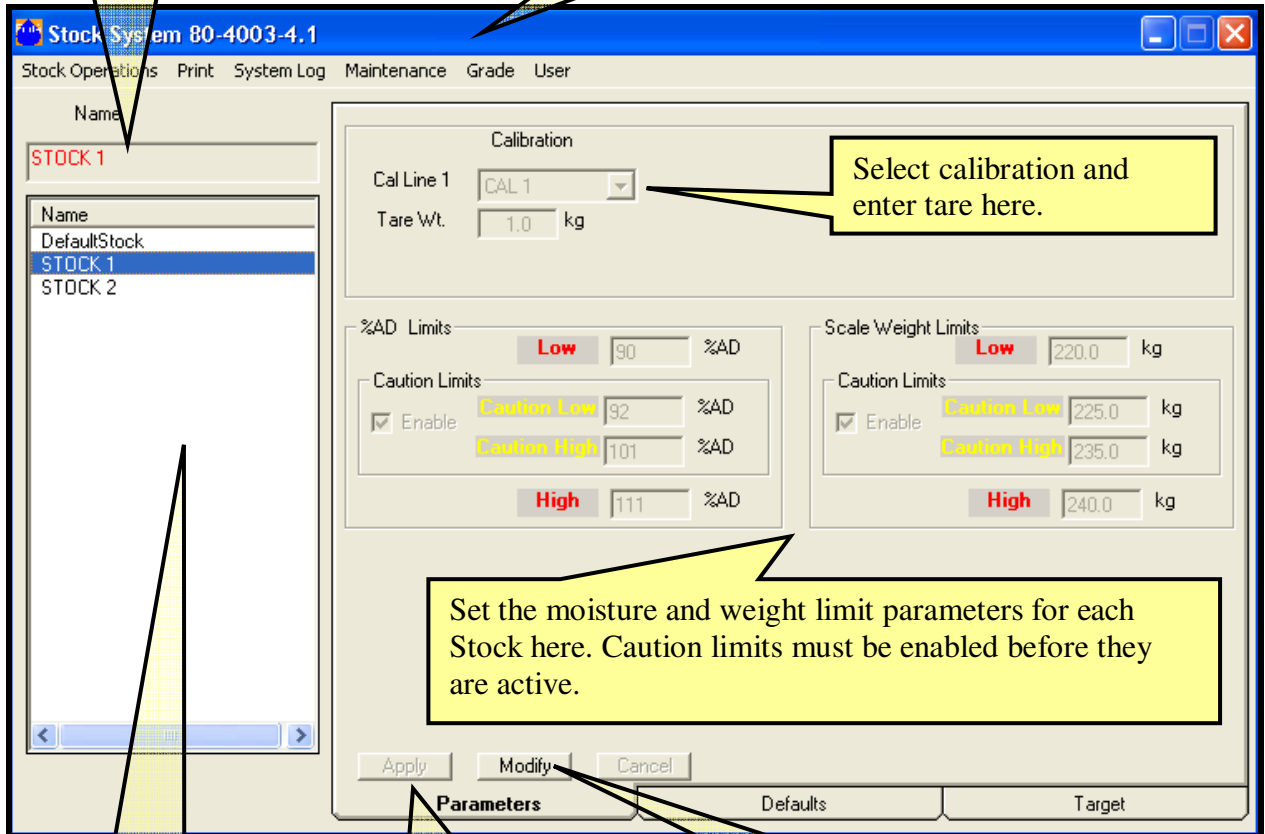
The Stock and Grade System windows both use a similar format with a menu bar, a Parameters tab, a Name entry text box, a listview of names and a set of control buttons.



2 STOCK SYSTEM: PARAMETERS TAB

The Name text box is for selecting the current Stock name and entering new names.

The Stock System menu bar has six drop-down menus. Certain menus are optional based on system configuration. Open the Grade System from the Stock System menu bar.



Select calibration and enter tare here.

Set the moisture and weight limit parameters for each Stock here. Caution limits must be enabled before they are active.

The APPLY, MODIFY and CANCEL Buttons. Click on MODIFY to change entries.

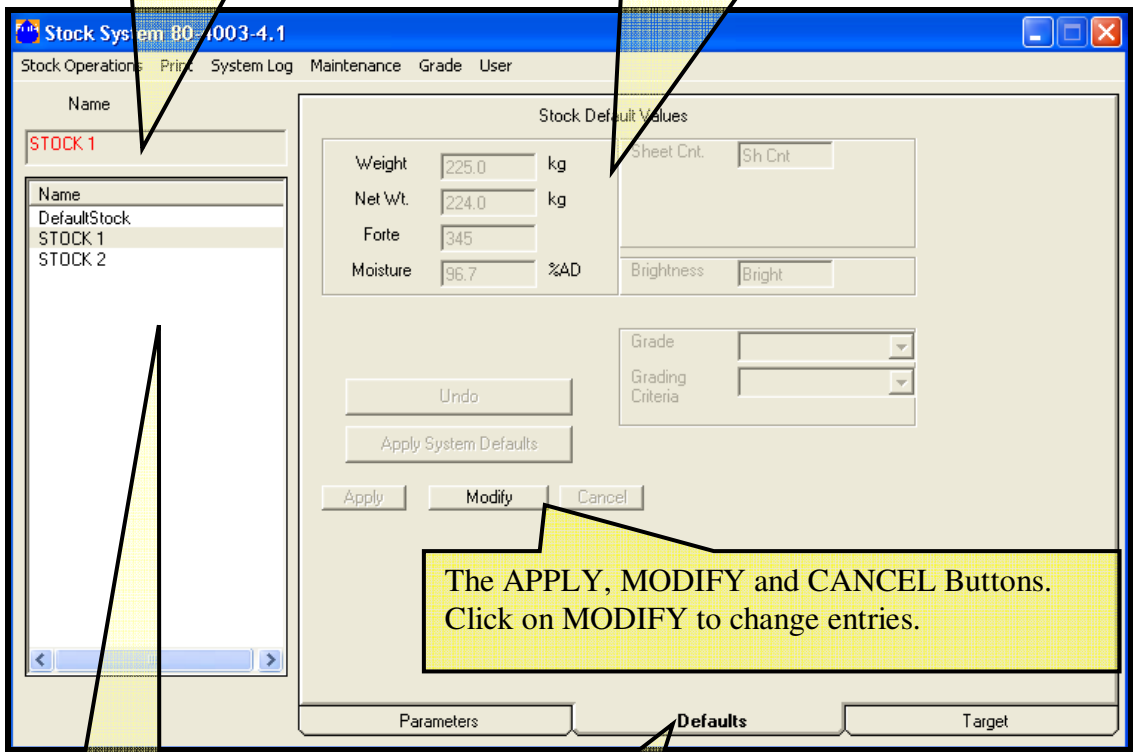
The PARAMETERS tab. Each Stock name has an associated set of three tabs. The TARGET tab is optional based on configuration.

The list view of all Stock names.

3 STOCK SYSTEM: DEFAULTS TAB

Enter default values for Weight, Net Weight, Forté Number and Moisture. These values will be used by the program in cases where limits are exceeded and default values must be applied.

The Name text box displays the name of the current Stock.



The APPLY, MODIFY and CANCEL Buttons. Click on MODIFY to change entries.

The DEFAULTS tab. Each Stock name has an associated set of three tabs. The TARGET tab is optional based on configuration.

The list view of all Stock names.

4 GRADES SYSTEM WINDOW

The Name text box displays the name of the current Grade.

The Grade System has five menu bar commands. Use the Stock command to close Grade and return to the Stock window.

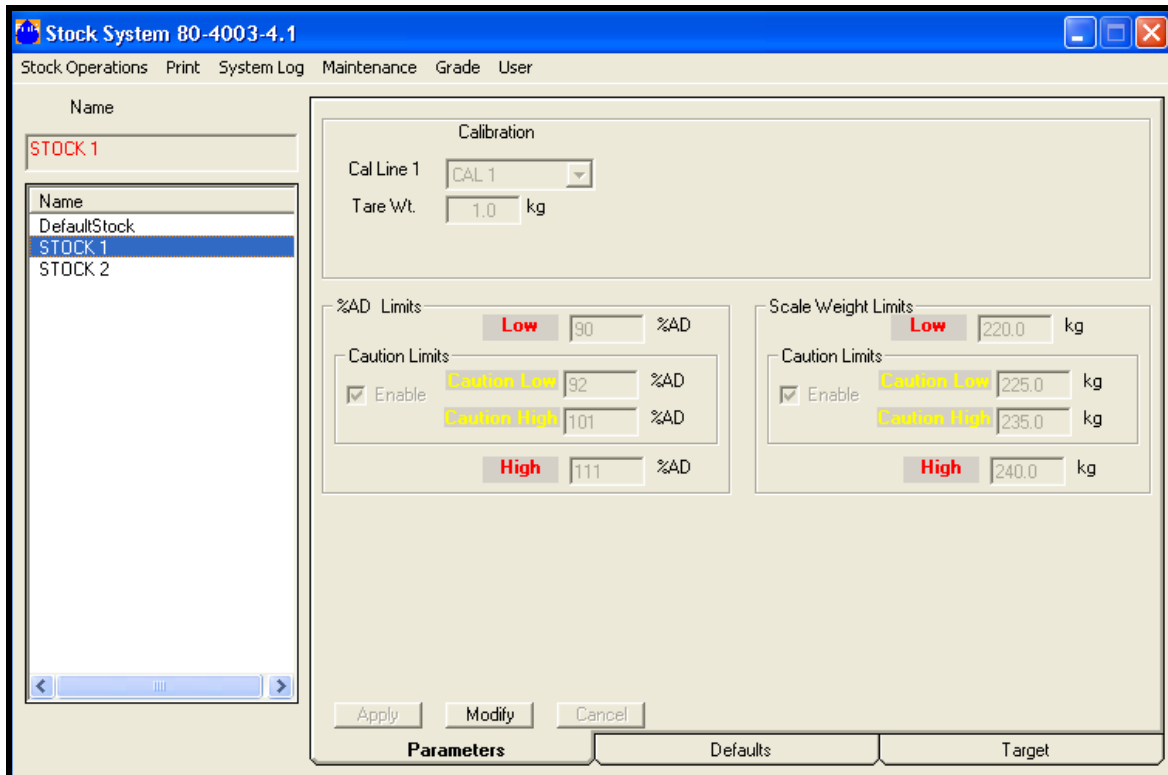
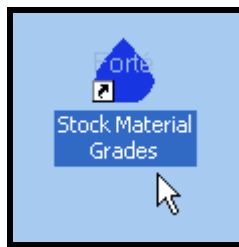
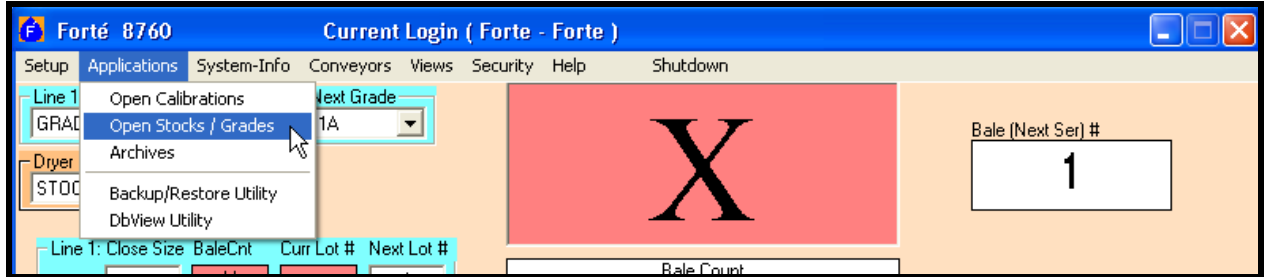
Select the Stock Type to associate with a Grade.

The APPLY, MODIFY and CANCEL Buttons. Click on MODIFY to change entries. Click on APPLY to save new entries.

The list view of all Grade names.

5 OPENING THE STOCK SYSTEM WINDOW

The Stock System window is the main window in the Stock/Grade Subsystem. It opens by default when the Stock/Grade Subsystem is activated from the Forté 8760 menu bar Applications command, or by clicking on the Windows XP desktop icon for Stocks and Grades. Stocks are named and defined in the Stock System window.



The Stock System window consists of:

- The Name text box for the current stock name.
- The list view box of all stock names.
- Parameters and Defaults tab boxes. Each stock name has its own associated tab boxes.
- A menu bar with six drop-down menus: Stock Operations, Print, System Log, Maintenance, Grade and User.
- Some menus may be optional based on system configuration.

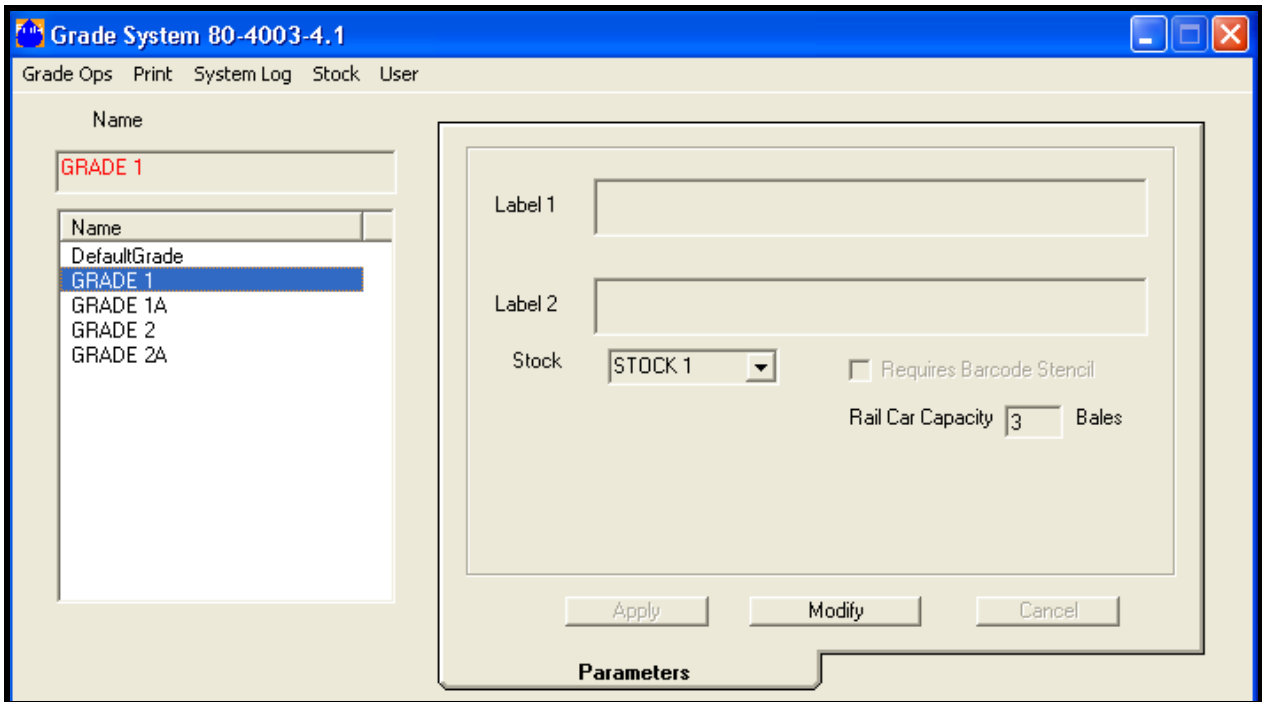
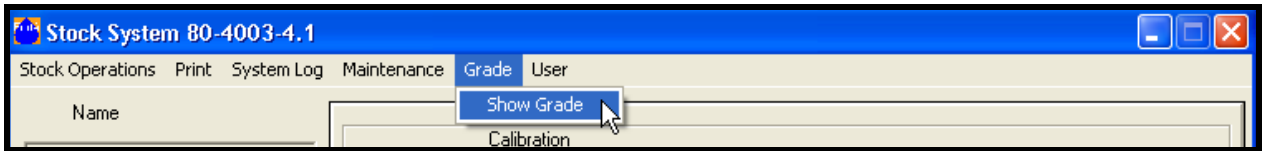
The Stock System Window permits the user to:

- Add a new stock and define its parameters and default properties.
- Edit the name and parameters of an existing stock.
- Delete a selected stock.
- Restore a selected stock.
- Delete all defined stocks.
- View the parameters of one stock at a time.
- View and select from a list of all defined stocks.
- Print the parameters of one stock or all stocks.
- Access the Stock System log.
- Compact the Stock/Grade database before a backup.
- Create and restore Stock/Grade backups.
- Log on or log off the Stock/Grade System.
- Assign each stock a specific calibration from the Calibration Subsystem.
- Assign a tare weight, if required.
- Assign minimum and maximum range limits for moisture and for weight.
- Assign caution limits for moisture and for weight. The assigned caution limits must be enabled by selecting a check box on the Parameters tab.

6 OPENING THE GRADE SYSTEM WINDOW

Grades allow the user to define different products within a stock type. Grades are named and defined in the Grade System window.

The Grade System window is opened from the Stock System menu bar commands.



The Grade System window consists of:

- The Name text box for the current grade name.
- The list view box of all grade names.
- A menu bar with five drop-down menus: Grade Ops, Print, System Log, Stock and User.

The Grade System Window permits the user to:

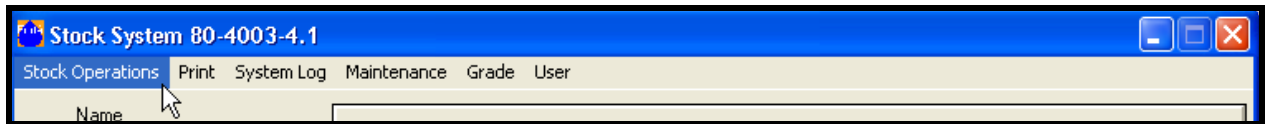
- Add a new grade and define its parameters and default properties.
- Assign each grade to a particular stock previously defined in the Stock System.
- Edit the name and parameters of an existing grade.
- Delete a selected grade.
- Restore (Undo-Delete) a selected grade.
- Delete all defined grades.
- View the parameters of one grade at a time.
- View and select from a list of all defined grades.
- Print the parameters of one grade or all grades.
- Access the Grade System log.
- Compact the Grade database before a backup.
- Create and restore Grade backups.
- Log on or log off the Grade System.
- Define Rail Car Capacity in terms of the number of bales per car.

7 COMMON COMPONENTS OF THE STOCK AND GRADE SYSTEM WINDOWS

The Stock and Grade System windows both use a similar format with a menu bar, a Parameters tab, a Name entry text box, a listview of names and a set of control buttons.

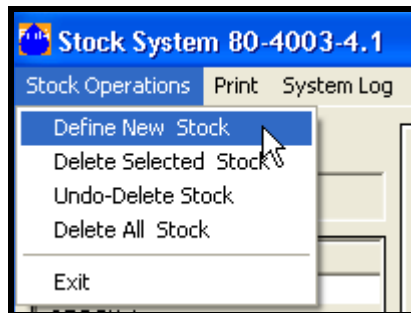
7.1 STOCK SYSTEM MENU BAR

The Stock System command menu bar contains six drop-down menus; Stock Operations, Print, System Log, Maintenance, Grade and User.



7.2 STOCK OPERATIONS MENU BAR COMMANDS

Stock Operations is the first of six menus on the Stock System command menu bar. Stock Operations contains five commands:



- **DEFINE NEW STOCK** allows the user to define a new stock by entering a name in the Name text box and then filling in data in the Parameters and Defaults. Name lengths of up to twenty alphanumeric characters plus symbols are allowed.
- **DELETE SELECTED STOCK** allows the user to delete the selected stock in the name list box.
- **UNDO-DELETE STOCK** allows the user to restore the most recently deleted stock while the Stock System module is still open. The Undo-Delete Stock command will not restore previously deleted stocks once the Stock System module is closed.

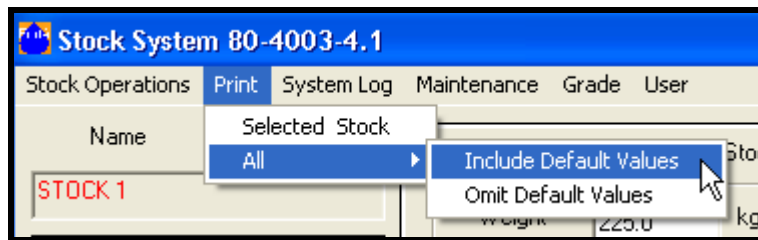
- DELETE ALL STOCK allows the user to delete all of the stocks in the Stock System database. This command is irrevocable. The user is warned twice that all stocks will be deleted. A backup of the stock/grade database is recommended before using this command.
- EXIT allows the user to close the Stock System window.

7.3 PRINT MENU COMMANDS

PRINT is the second of six menus on the Stock System menu bar. There are two commands available on the PRINT menu:

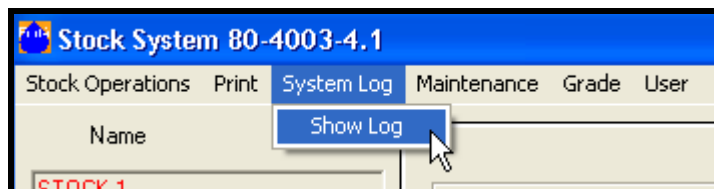
- SELECTED STOCK prints the stock data for the name selected in the stock name list.
- ALL prints the data for all stocks. The user selects to include or omit the Default Values data.

NOTE: To use these commands an active system printer must be configured in the Windows Control Panel settings and attached to parallel port of the Forté computer or the computer must have access rights to a network printer.



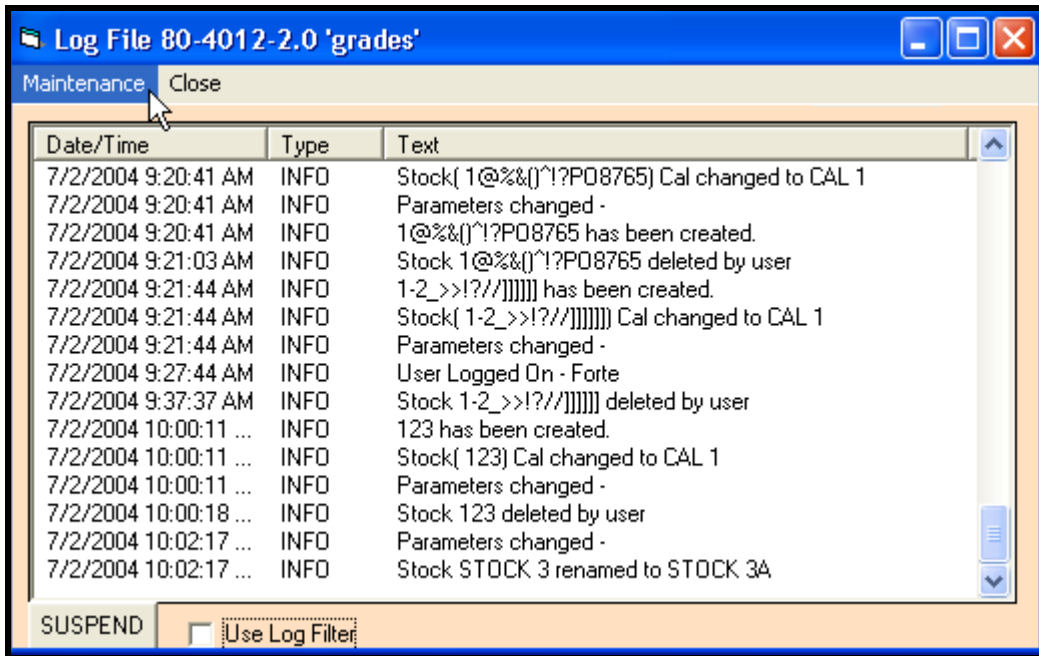
7.4 SYSTEM LOG COMMAND

System Log is the third of six menus on the Stock System menu bar. Show Log is the one command available on the System Log menu. Show Log opens the Log File “Grades” window.

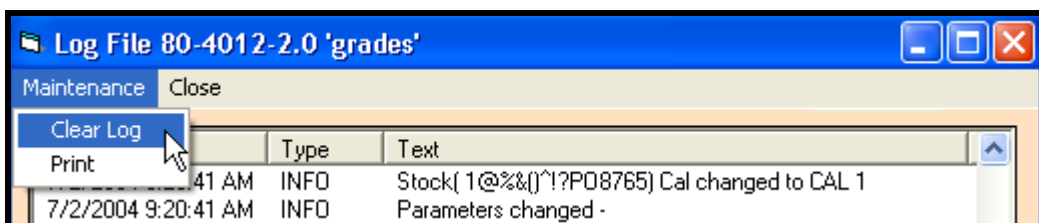


7.5 LOG FILE “GRADES” WINDOW

The Log File for the Stock System contains messages related to the operation of the Stock System during regular use. The message fields contain system information for the operators, plus error, warning or status messages for troubleshooting.

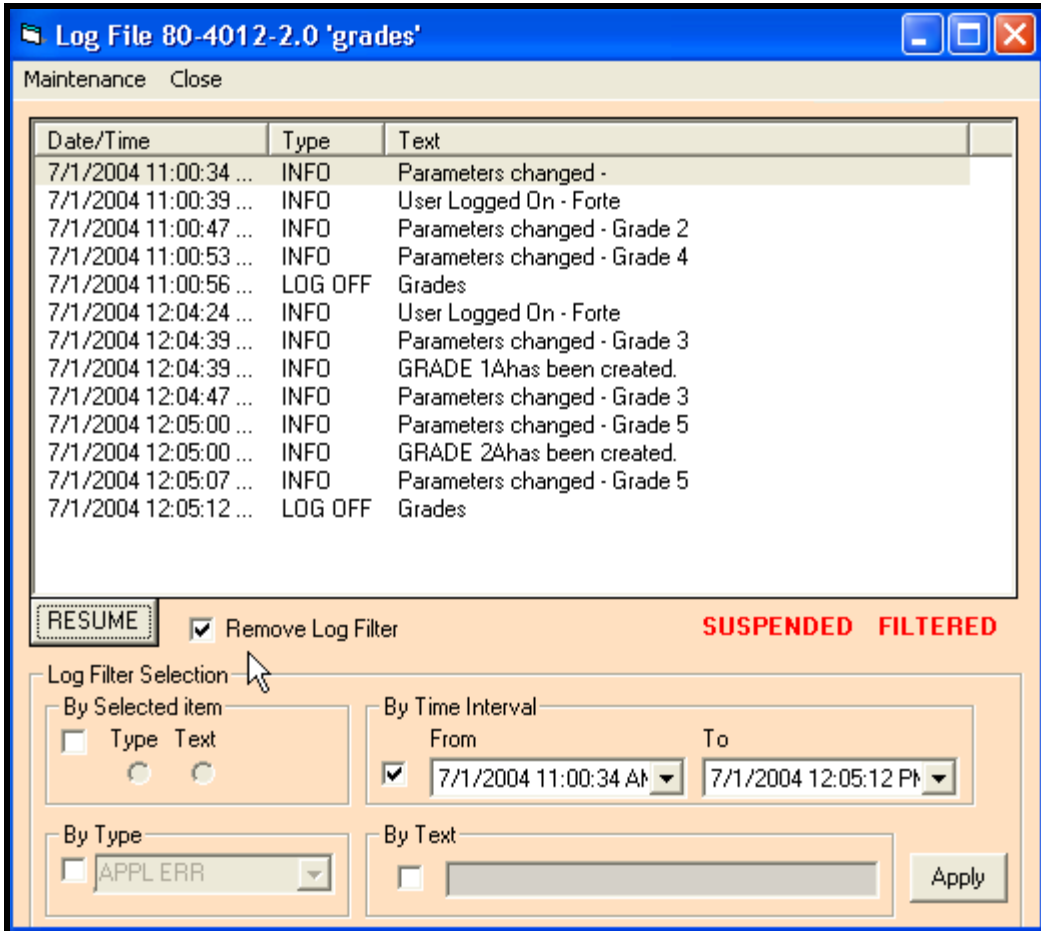
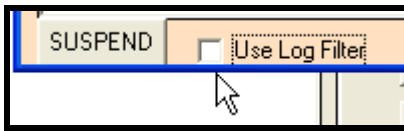


There are two command menus available on the Log File menu bar.



- The MAINTENANCE menu allows the user to print the log file or to clear the log file.
- CLOSE allows the user to exit from the Log File window.

The USE LOG FILTER check box allows the user to select the display of data based on data Type, Text in the message field, or a particular Time Interval. Check the box to display the filter screen.

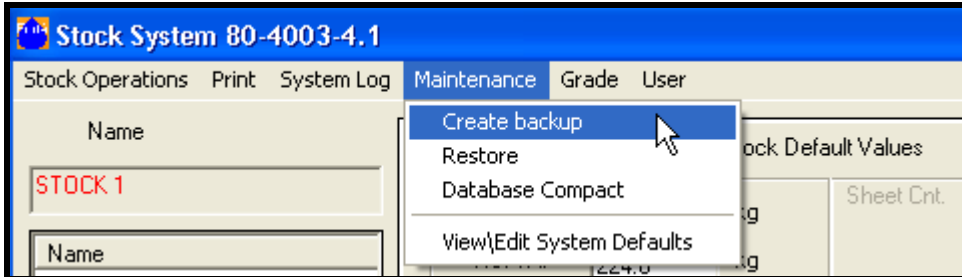


The RESUME / SUSPEND button turns the accumulation of records into the log file display on and off. Log status is displayed in red on the right side of the window.



7.6 STOCK SYSTEM MAINTENANCE COMMAND MENU

Maintenance is the fourth of six menus on the Stock System menu bar. There are four commands available on the Maintenance menu:

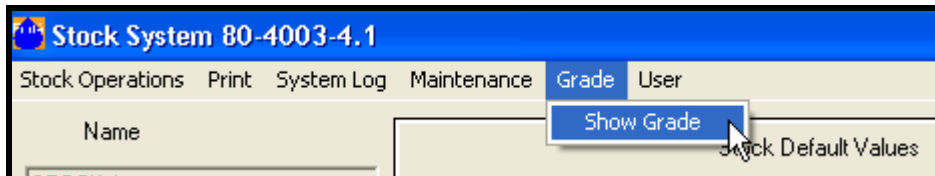


- CREATE BACKUP allows the user to create a backup of the stock/grade data.
- RESTORE allows the user to restore stock/grade data from a backup directory.
- The DATABASE COMPACT command compacts the stock/grade database so that a large file can be saved to diskette. The Forté Moisture Measurement system cannot be active when the Compact command is used. Close the Forté Measuring System window before using the Database Compact command.
- VIEW\EDIT SYSTEM DEFAULTS allows the user to view and edit the data entries in the Stock Default Values box.

Refer to the Frequently Asked Questions section of this manual for information on using these maintenance commands.

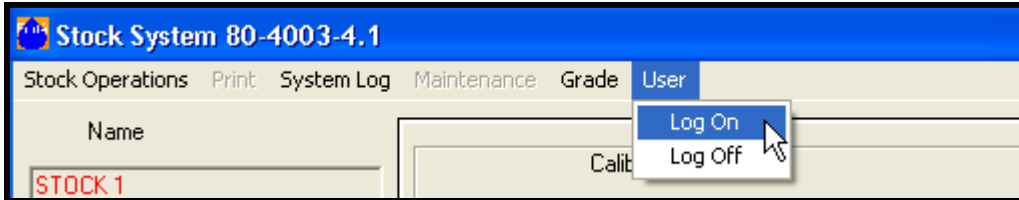
7.7 GRADE MENU COMMAND

The Grade menu command opens the Grade System window. Both Grade and Stock System windows can be opened at the same time.



7.8 USER COMMAND MENU

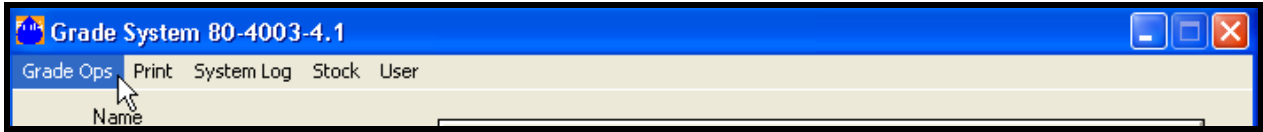
User is the last of the six menus on the Stock System menu bar. There are two commands available on the User menu:



- LOG ON allows a user to log on to the Stock System and activates access to the Stock System menus and commands for new stocks and editing existing stocks. Logging on to the Stock System also allows the user access to the Grade System commands.
- Each user logs on to the system using a name and password provided by the system administrator. The level of access to the menus is determined by the user's group access level. The system administrator assigns names, passwords and different access levels to different users in the Forté Security Subsystem.
- If a user is already logged on to the Stock System but opens the Log In window and then closes it without re-entering the correct log in data, the user will be logged out and LOG OFF conditions will apply. See below.
- LOG OFF allows a user to log off the Stock System. The Print, System Log and User menus remain active. The Stock Operations (except Exit), Grade and Maintenance menus are inactive. Adding and editing data is not allowed.

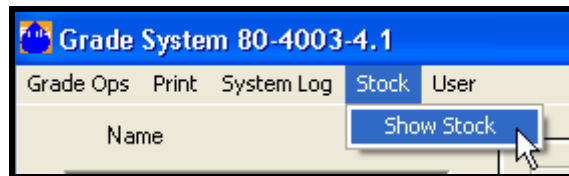
7.9 GRADE SYSTEM MENU BAR

The Grade System menu bar contains five drop-down menus; Grade Operations, Print, System Log, Stock and User.



The Grade System menu bar commands function similar to the Stock System menu bar commands with the following exceptions:

The Show Stock command re-opens the Stock System window. The Grade System window will remain open.



If the user logs off from the Grade System User menu, the Grade System window must be closed BEFORE the user attempts to log in from the Stock System User menu. Otherwise, the Log In Validation window will not appear.

NOTE: The User menu Log On command is NOT active in the Grade System.
The User menu Log Off command is active in the Grade System

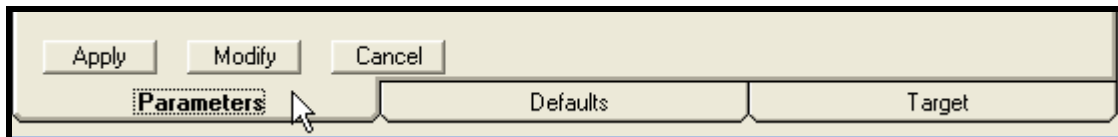
7.10 TABS AND CONTROL BUTTONS

The Stock and Grade windows both have a Parameters tab and APPLY, MODIFY and CANCEL control buttons.

- The APPLY command button activates edited values.
- The MODIFY command button in the Parameters box allows the user to edit the existing entries in the Parameters box.
- The CANCEL command button restores previous entries if it is pressed before the APPLY button.

The Stock window also contains a Defaults tab and an optional Target tab.

Select the tabs and activate the buttons with the mouse, or use the TAB key to cycle through the available boxes and buttons. In addition to clicking on a position with the mouse, the ENTER key will also activate a selected position.



7.11 PARAMETERS TAB BOXES

The Parameters tab boxes display data text boxes and combo boxes associated with the current named stock and grade. The Stock data includes the Cal identification numbers, the Tare Weight, the minimum and maximum Moisture Limits, and the minimum and maximum Weight Limits.

The Grade data includes the associated stock name for the selected grade.

Enter and edit values in the Parameters data fields with the following tools:

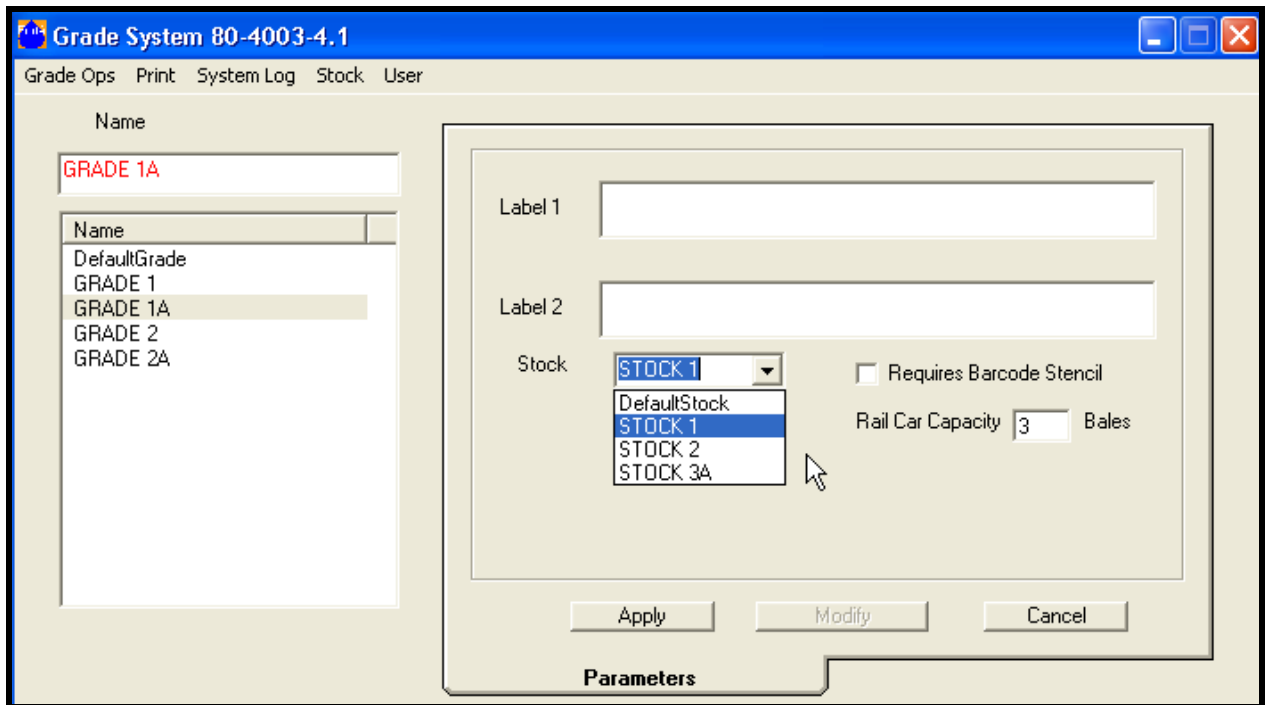
- The DEFINE NEW STOCK and GRADE commands allow a user to define new stock and grade names and enter associated parameters.
- The DELETE STOCK and GRADE commands allow a user to delete selected stocks and grades.
- The UNDO-DELETE commands restore deleted stocks and grades.

The screenshot displays a software interface for the Parameters tab. It is organized into several sections:

- Calibration:** Includes a dropdown menu for 'Cal Line 1' set to 'CAL 1' and a text input for 'Tare Wt.' set to '1.0 kg'.
- %AD Limits:** A section with a 'Low' label and a value of '90 %AD'. Below it, a 'Caution Limits' sub-section has an 'Enable' checkbox checked, with 'Caution Low' at '92 %AD' and 'Caution High' at '101 %AD'. A 'High' label is at the bottom with a value of '111 %AD'.
- Scale Weight Limits:** A section with a 'Low' label and a value of '220.0 kg'. Below it, a 'Caution Limits' sub-section has an 'Enable' checkbox checked, with 'Caution Low' at '225.0 kg' and 'Caution High' at '235.0 kg'. A 'High' label is at the bottom with a value of '240.0 kg'.

At the bottom of the interface, there are three buttons: 'Apply', 'Modify', and 'Cancel'. Below the buttons are three tabs: 'Parameters' (which is selected), 'Defaults', and 'Target'.

THE STOCK PARAMETERS TAB



THE GRADE PARAMETERS TAB

7.12 DEFAULTS TAB BOX

The Stock Default Values - Weight, Net Weight, Forté Number and % Moisture Content - are stored in the Defaults tab box for each Stock name. The default values are applied if actual values are not available or if the system limits are exceeded, depending upon configuration.

A separate set of default values can be assigned to each stock named in the listview box.

Select the stock name by clicking on it. The selected stock name should appear in the Name box.

Click on the MODIFY button to edit the entries for the selected stock.

Stock Default Values

Weight	225.0	kg	Sheet Cnt.	Sh Cnt
Net Wt.	224.0	kg		
Forte	345		Brightness	Bright
Moisture	96.7	%AD	Grade	
			Grading Criteria	

Undo

Apply System Defaults

Apply Modify Cancel

Parameters Defaults

NOTE: The Maintenance menu on the Stock System menu bar contains a command, VIEW / EDIT SYSTEM DEFAULTS. This command allows the user to set the global stock default values. The global values are available to apply to each stock by pressing the MODIFY button, and then the APPLY SYSTEM DEFAULTS button on the Stock System Defaults tab.

System Default Values

Weight	123.0	kg	Sheet Cnt.	Sh Cnt
Net Wt.	133.0	kg		
Forte	999		Brightness	Bright
Moisture	95	%AD		

7.13 NAME TEXT BOX

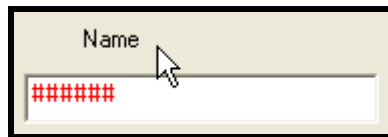
The NAME text box displays the name of the currently selected stock or grade.

Specify the name with the Define New command from the Operations command menu. Also, use this text box to change or edit a name by selecting it in the listview by highlighting it, and then click on the MODIFY button in the Parameters tab box.

Up to twenty alphanumeric and symbolic characters are allowed in a name entry. Although lower case characters can be used during the entry of the name, the name will be displayed only in upper case characters after entry.

Type in the name and press the ENTER key to add it to the listview of active names.

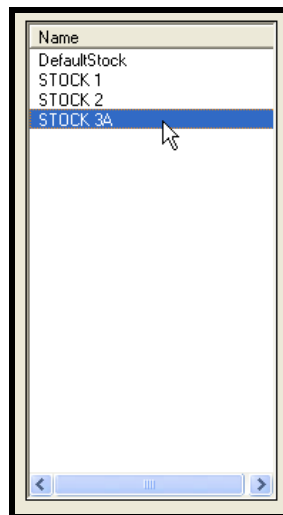
Modifications to defined names must be activated with the APPLY button.



7.14 STOCK/GRADE NAMES LISTVIEW BOX

The NAMES listview box allows the user to select one specific name for parameter display or editing.

Use the mouse to select a name from the list by clicking on it, or use the TAB key to move the focus to the listview, the arrow keys to highlight a specific name, and the ENTER key to select the name.



8 FREQUENTLY ASKED QUESTIONS: THE STOCKS/GRADES SUBSYSTEM

The Forté Stocks/Grades Subsystem allows the user to easily name, edit and store a large number of product identifiers. New entries and changes are entered by using the menu bar commands along with the MODIFY and APPLY buttons.

The following questions address the most commonly used functions available on the Stock System and Grade System windows.

The answers to the questions are in the form of numbered procedures.

Some of the numbered steps in each procedure indicate a required user action.

Other steps describe the system's response to a user action.

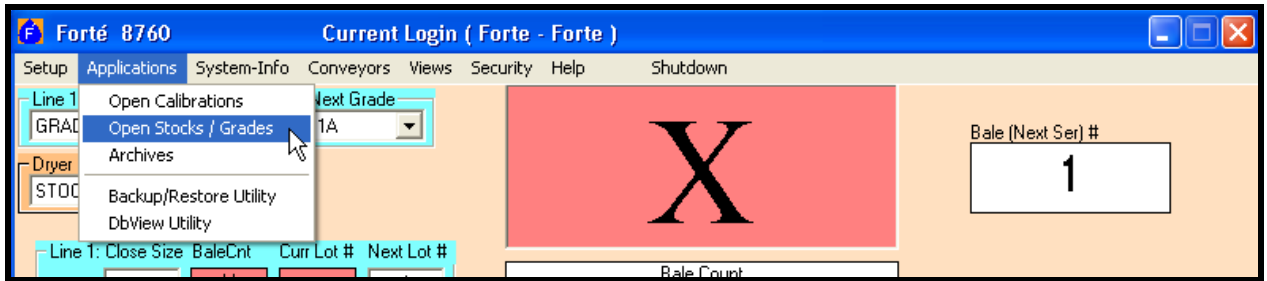
The step-by-step answers assume that the user is familiar with using standard mouse and keyboard procedures to select and activate system menus and commands. The terms “select” and “click on” are used interchangeably and indicate that the user should highlight the described menu and command items by placing the mouse cursor over them, and then click the left mouse button to complete the action. References to the ENTER key indicate that a keyboard **↵** ENTER keystroke is required.

The program also supports the following navigation procedures in most windows:

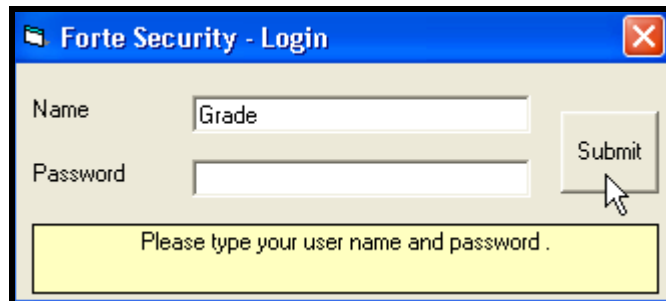
- The use of the TAB key to cycle through focus points on each window.
- The use of the arrow keys to highlight items within combo boxes and listviews.
- The ENTER key to select and activate highlighted focus points and keyboard data entries.

8.1 HOW DO I ENTER THE STOCKS / GRADES SUBSYSTEM?

1. Start the Forté Moisture Measurement program by clicking on the Forté X760 program icon on the Windows desktop.
2. The main Forté 8760 and Summary windows are displayed.
3. Select the Applications menu from the drop-down menus bar.
4. Select the Open Stocks / Grades command.



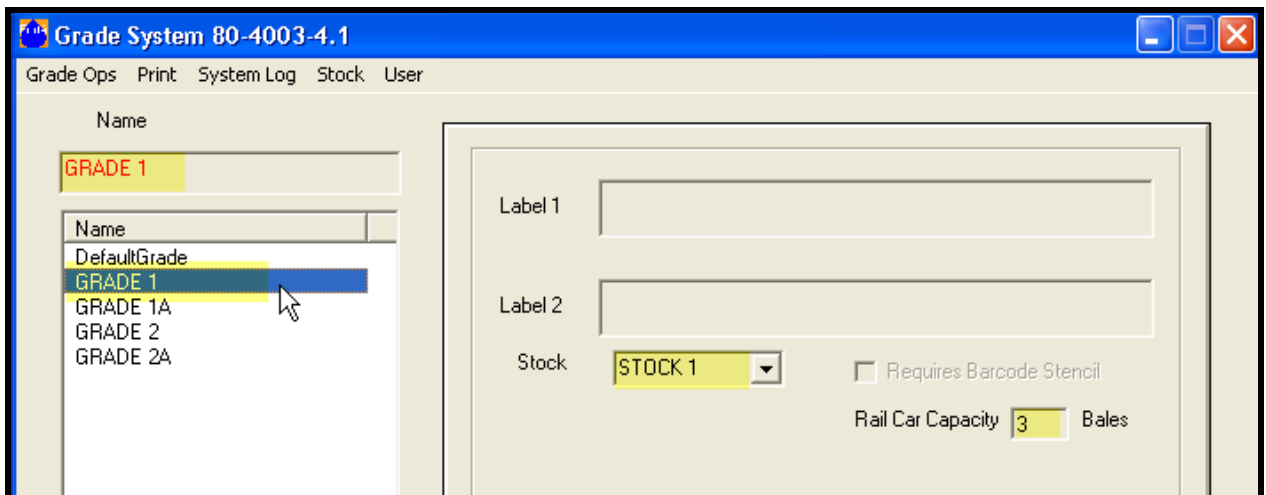
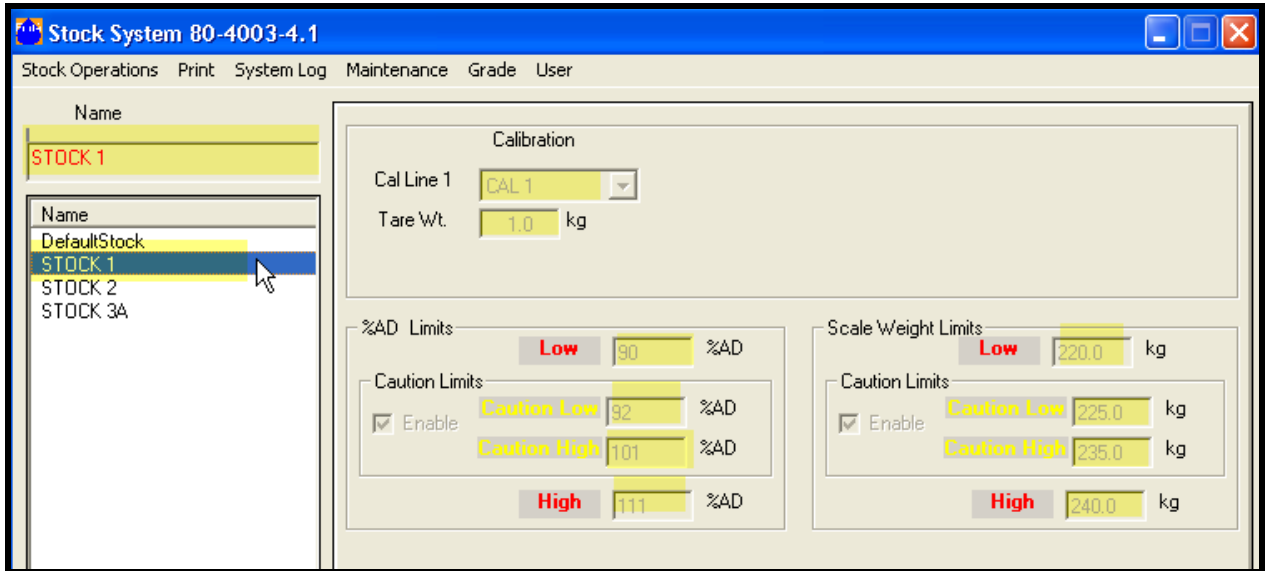
5. If the user is not already logged on, the Forté Security – Login validation box is displayed. If a recognized user with sufficient access rights is already logged on to the system the validation box is not displayed. The Stock System window will be displayed immediately.
6. Enter the Name of a registered user into the Login box (Grade is the default name).
7. Enter the Password (if Grade is used, no password is required).
8. NOTE: Names and passwords are case sensitive.
9. Left click on the Submit button with the mouse.



10. The Stock System window is displayed.
11. The subsystem may also be started directly by clicking on the Stock Material Grades icon on the Windows desktop. The Validation box will appear. Follow steps 6 to 9 above to complete the start up.

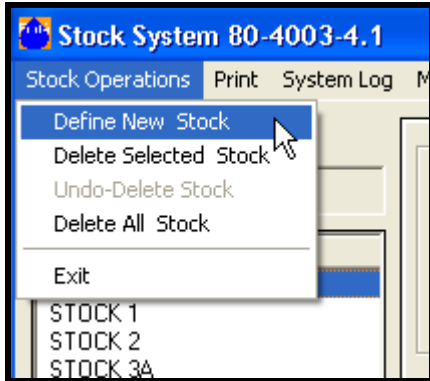
8.2 HOW DO I VIEW THE PARAMETERS OF AN EXISTING STOCK OR GRADE?

1. Go to the Stock System or Grade System window.
2. Click on the name of the stock or grade to be viewed in the Listview box.
3. The selected name will be displayed in the Name text box.
4. The data associated with the stock name can be viewed in the Parameters and Defaults tab boxes.



8.3 HOW DO I CREATE A NEW STOCK?

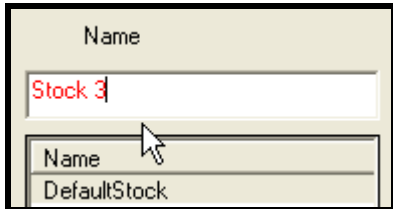
1. Go to the Stock System window.
2. Select the Stock Operations drop-down menu.
3. Select Define New Stock from the Stock Operations menu.



4. The Name text box changes format to display red # # # # # # on a white background.

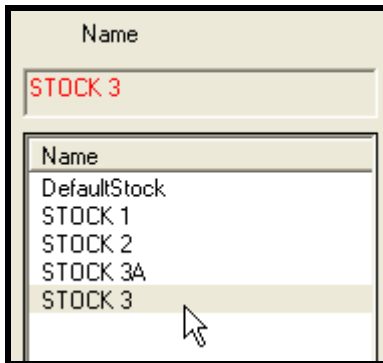


5. The Cancel button in the Parameters box becomes active.
6. The cursor focus is in the Name text box.
7. Type in a new stock name and press the ENTER key. Up to twenty alphanumeric characters and symbols from the keyboard can be entered. Although lower case letters can be entered, the system will only display upper case characters after the name is accepted.

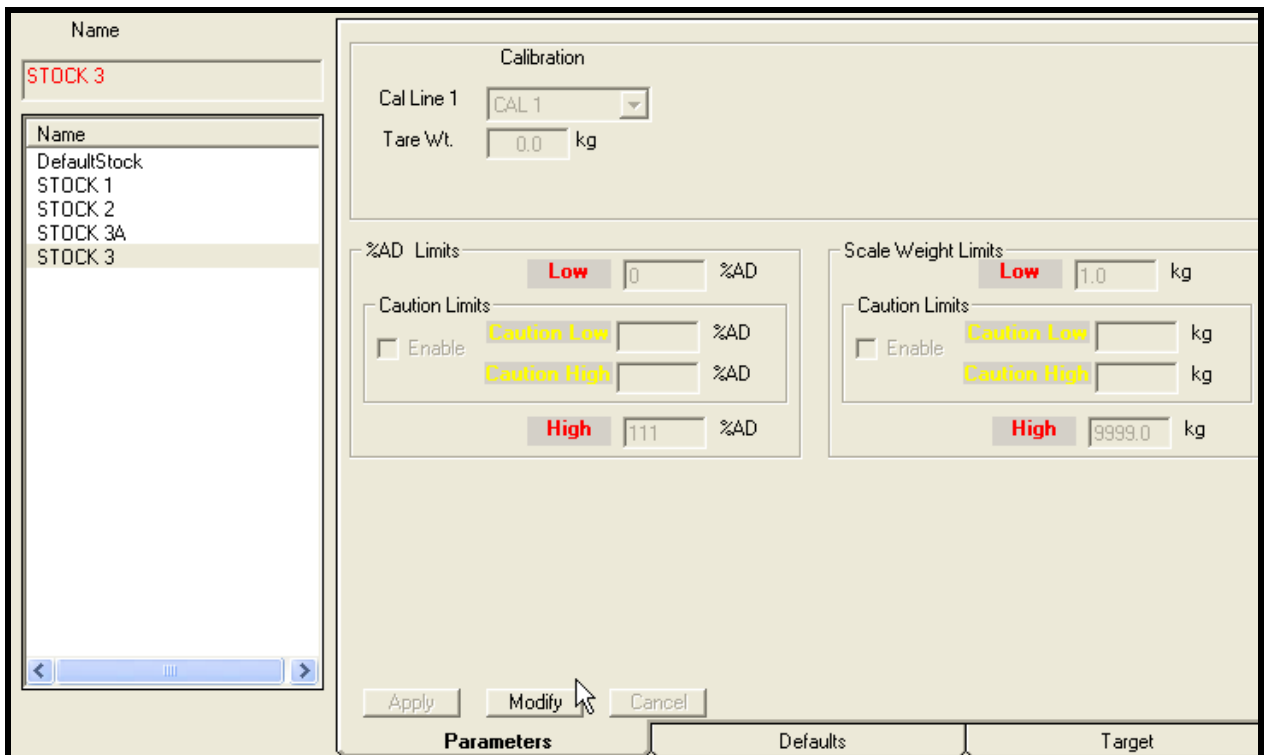


8. The system verifies that the new name is unique. If a duplicate name is found, a warning message is displayed and the operator must enter a new name.

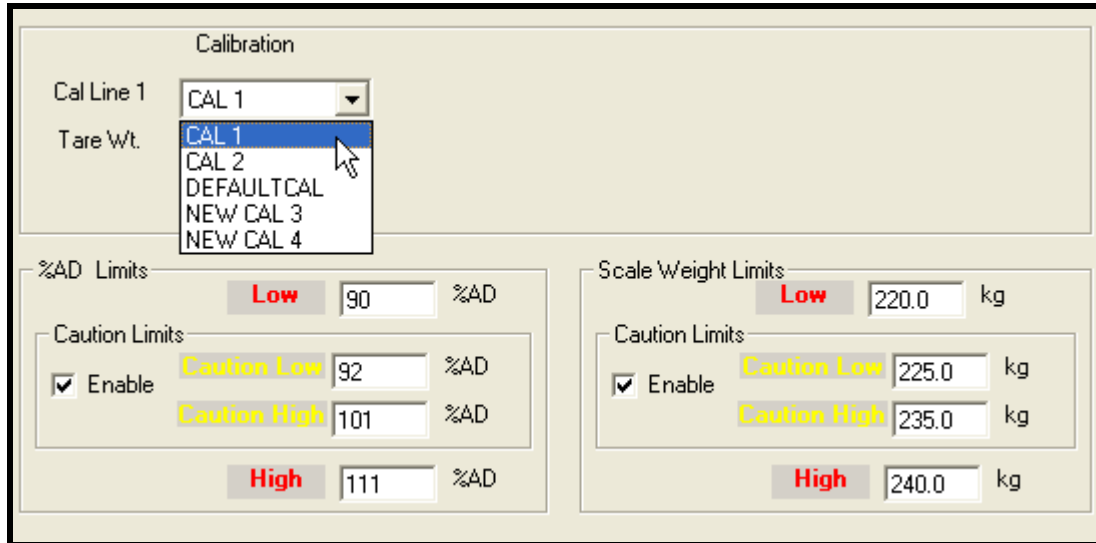
9. Before the ENTER key is pressed, the user may cancel the Define New Stock routine by clicking on the Cancel button. The new stock process is aborted and the previous stock name is displayed. Once the ENTER key is pressed, the new stock name must be deleted by using the Delete Selected Stock command.
10. When the new stock name is accepted, it is displayed as the current stock name and added to the stock name list box.



11. The Modify button in the Parameters box becomes active.
12. Click on the Modify button to enter or edit data in the Parameters box.



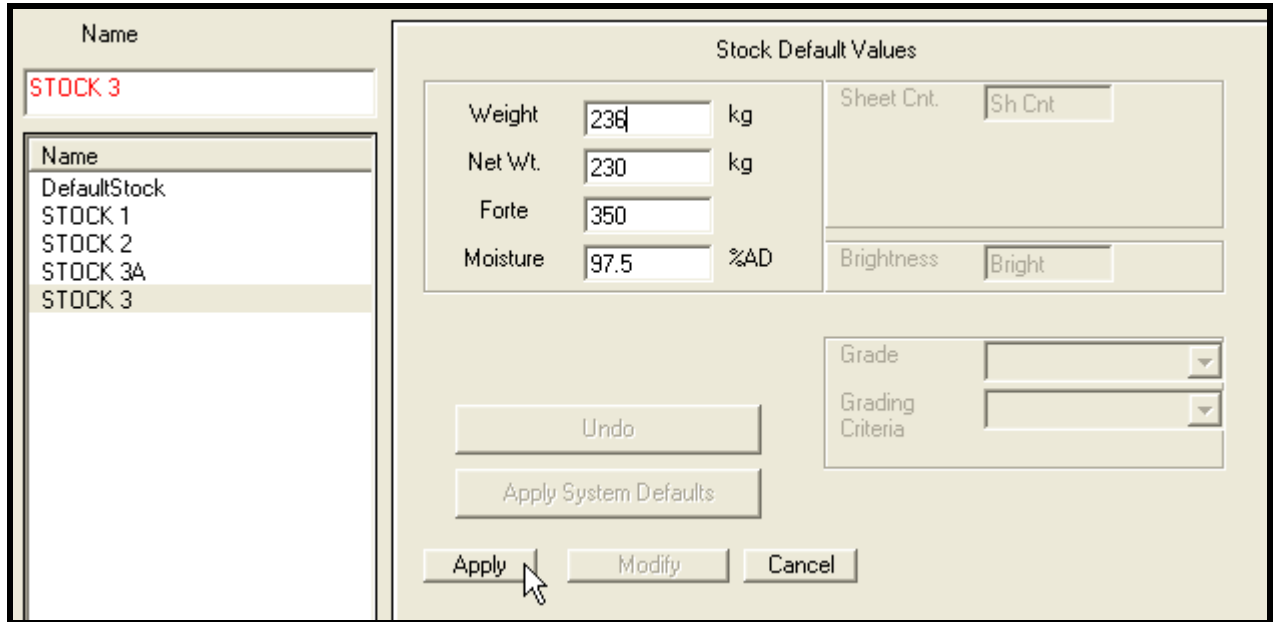
- The background color in all active Parameter boxes changes from gray to white. Use the mouse or the TAB and ENTER keys to advance through the text and combo box entries.



- Assign calibrations from the selection available in the Cal combo box. When a new calibration is required, use the Calibration Subsystem to enter sample data and create a new calibration before starting the Stock System.
- Assign a tare weight, if required, in the Tare Wt text box.
- Assign the minimum and maximum Moisture Limits.
- Assign the minimum and maximum Weight Limits.
- If Caution Ranges within the Moisture and Weight Limits are required, enter the Caution Limits and check-off the “Enable” box for each parameter.
- Apply and save the new entries by clicking on the Apply button in the Parameters box.

20. Click on the Defaults tab in the Stock System window.

21. The Stock Default Values box is displayed.



22. To enter or change the values in the text boxes, click on the Modify button. The background color in the active Default text boxes changes from gray to white. Use the mouse or TAB key to advance the cursor through the active text boxes. There are three possible entry sequences:

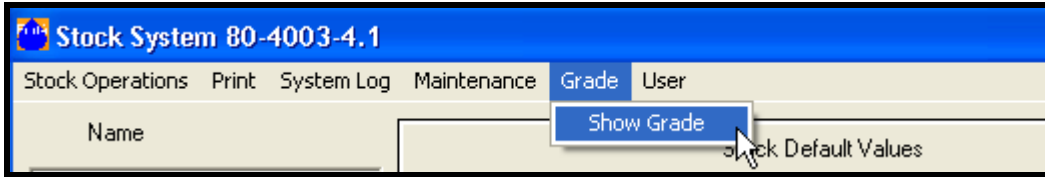
- Enter new values into the text boxes and then click on the Apply and Done buttons to save the entries.
- Click on the Undo button to return to previously applied entries, and apply and save those entries.
- Click on the Apply System Defaults button to apply the system default values. The System Default Values are defined by a command in the Maintenance menu. Click on the Undo button to restore the previous values, or the Done button to apply the defaults.

23. The Modify button becomes the only active button on the Defaults box.

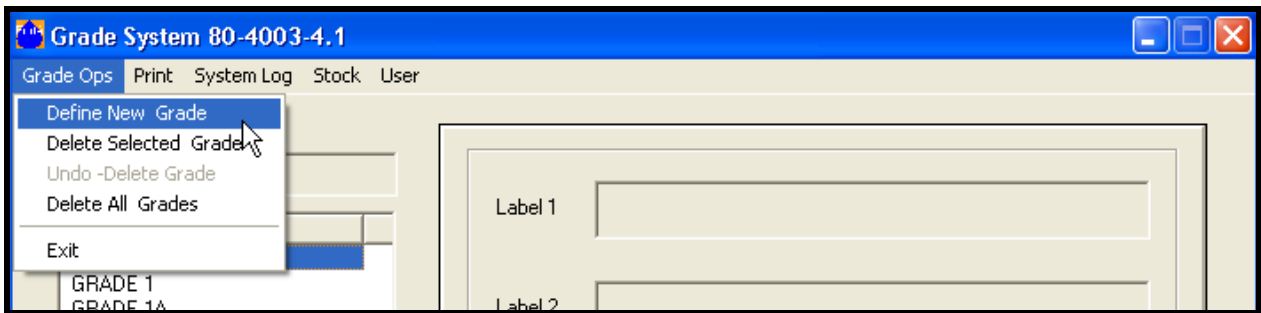
24. This completes the sequence of creating a new Stock.

8.4 HOW DO I CREATE A NEW GRADE?

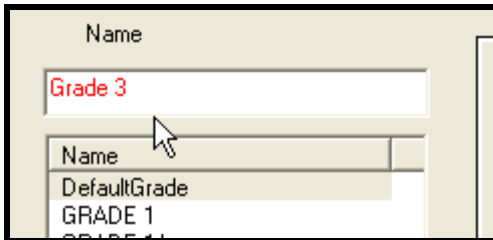
1. Go to the Stock System window. Select the GRADE menu from the menu bar commands.



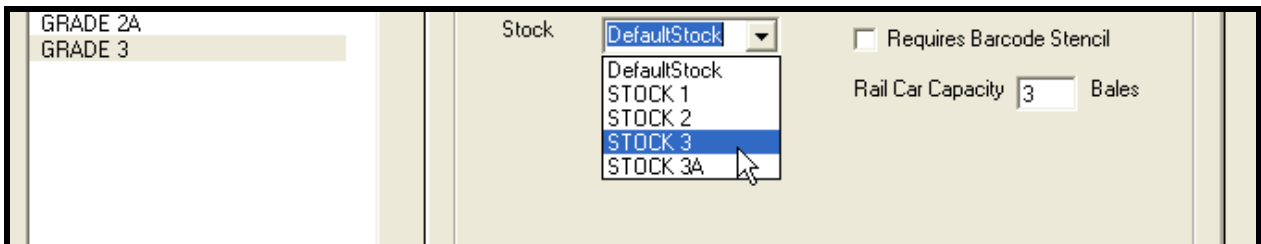
2. The Grade system window opens. Select the DEFINE NEW GRADE command from the GRADE OPS menu.



3. Enter the new grade name (20 character limit) into the NAME text box. Press the ENTER key.



4. Press the MODIFY button to allow for the selection of the associated stock name from the combo box.



5. In this example, Grade 3 is associated with Stock 3. Press the APPLY button to save the selection.

8.5 HOW DO I EDIT A STOCK OR GRADE BY CHANGING THE NAME, OR THE DATA IN THE PARAMETERS BOX?

Edit the Name box and/or Parameters box:

1. Go to the Stock System or Grade system window.
2. Click on the name of the item to be edited in the Name list box.
3. The item name will be displayed in the Name text box.
4. Go to the Parameters tab box.
5. Click on the Modify button.
6. The background color in the text and combo boxes will change from gray to white.
7. The Apply and Cancel buttons in the Parameters box become active.
8. Use the Tab key or the mouse to select the text boxes to be edited.
9. Use the Backspace key to delete the old data in text boxes.
10. Type in the new data entries. The system verifies that a new name is unique. If a duplicate name is found, a warning message is displayed and the operator must enter a new name.
11. Click on the arrows in the combo boxes to display and select new entries.
12. When changes are complete, click on the Apply button to apply and save changes, or the Cancel button to restore the previous entries in the Parameters box and the Name box.

8.6 HOW DO I EDIT THE STOCK DEFAULTS BOX?

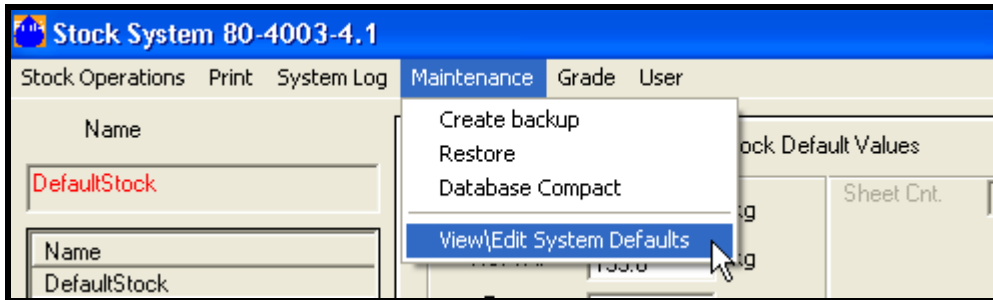
1. Go to the Defaults tab box.
2. Click on the Modify button.
3. The background color in the text and combo boxes will change from gray to white.
4. Use the Tab key or the mouse to select the text boxes to be edited.
5. Use the Backspace key to delete the old data in text boxes.
6. There are three possible ways of making changes:
 - Enter new default values into the text boxes and then click on the Apply and Done buttons to save the entries.
 - Click on the Undo button to return to previously applied default entries, and apply and save those entries.
 - Click on the Apply Defaults button to apply the system default values. Click on the Undo button to restore the previous values or the Done button to apply the Defaults.

The screenshot shows a dialog box titled "Stock Default Values" with a light beige background. It contains several input fields and buttons. On the left, there are four rows of text boxes: "Weight" with "123.0" and "kg", "Net Wt." with "133.0" and "kg", "Forte" with "999", and "Moisture" with "25" and "%AD". To the right of these are two more rows: "Sheet Cnt." with "Sh Cnt" and "Brightness" with "Bright". Below these fields are three buttons: "Undo" (with a mouse cursor over it), "Apply System Defaults", and a row of three buttons: "Apply", "Modify", and "Done". At the bottom right, there are two dropdown menus labeled "Grade" and "Grading Criteria".

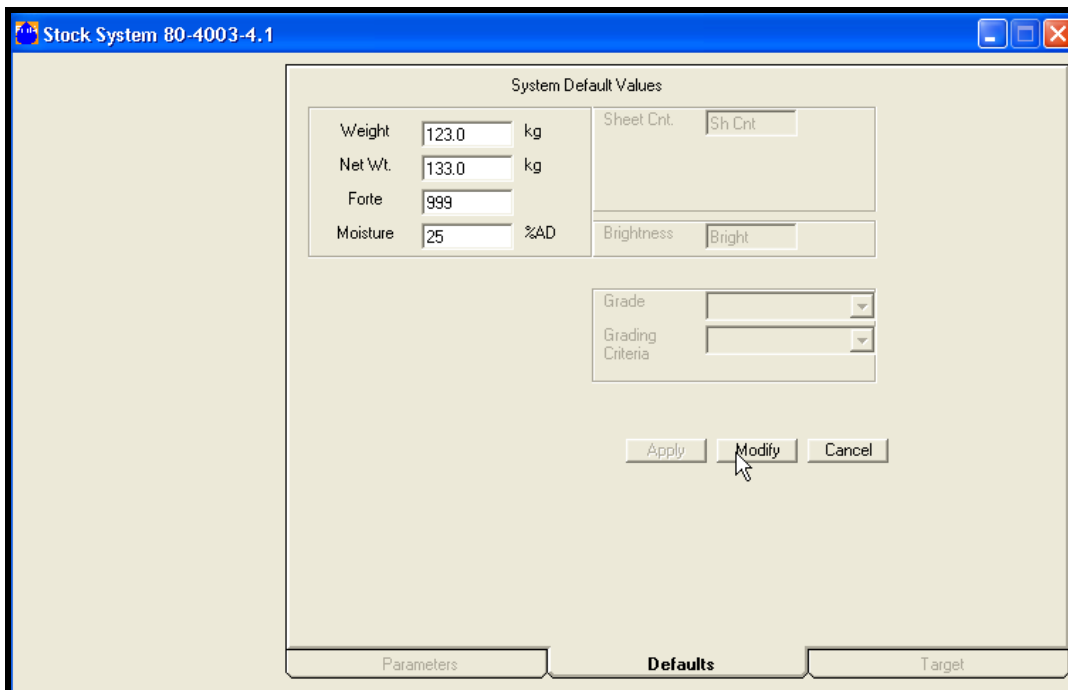
8.7 HOW DO I SET THE GLOBAL DEFAULT STOCK VALUES?

Each stock can have a set of unique default values, but a global set is available to apply to all stocks. The global default values for the Stock System are set from the Maintenance menu commands.

1. Select View / Edit System Defaults from the Stock System Maintenance menu.



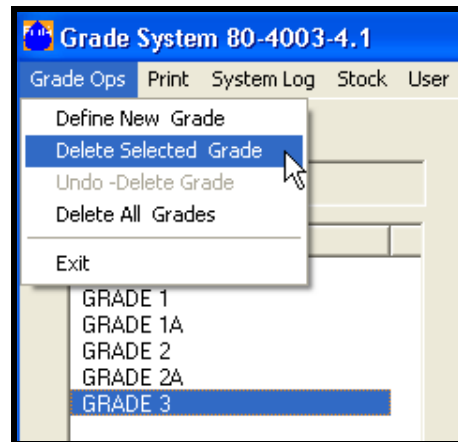
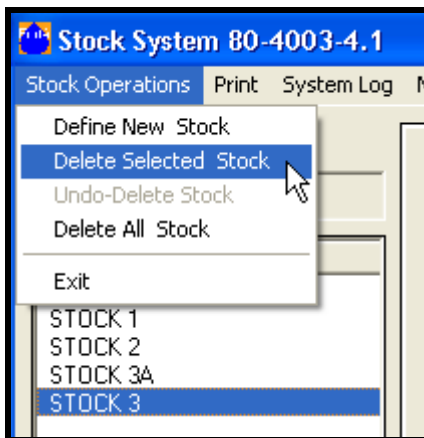
2. The System Defaults Values window opens.



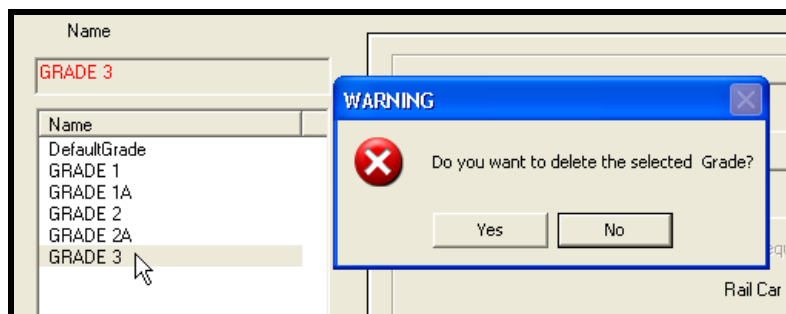
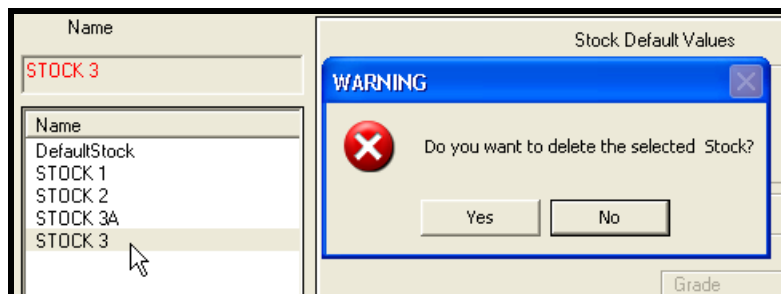
3. Click on the MODIFY to change the default values. To exit without making changes, press the CANCEL button.
4. To activate changes, press the APPLY button. The CANCEL button will become a DONE button. Press the DONE button to exit from the System Default Values window.

8.8 HOW DO I DELETE AN EXISTING STOCK (OR GRADE)?

1. Go to the Stock System or Grade system window.
2. Select the item name to be deleted from the Name list box.
3. Select the Stock Operations (or Grade Ops) drop-down menu.
4. Click on the DELETE SELECTED STOCK (or DELETE SELECTED GRADE) command.

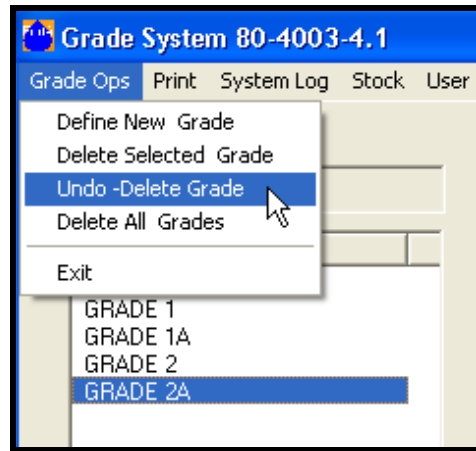
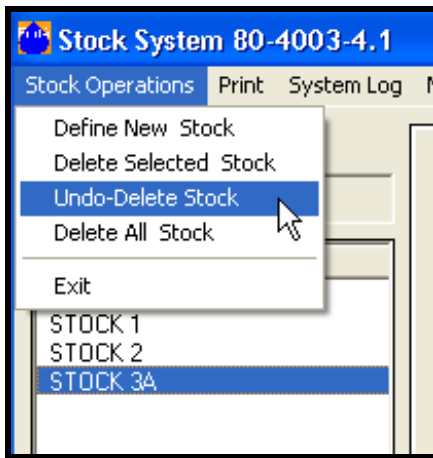


5. When this command is selected, a message box will immediately display asking the user to confirm the deletion request. If the user answers “Yes”, the Name box and the name list box will be updated to show that the selected stock or grade has been deleted. Otherwise, no change will occur.



8.9 HOW DO I RESTORE A DELETED STOCK (OR GRADE)?

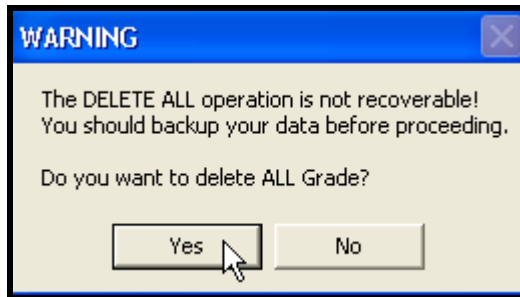
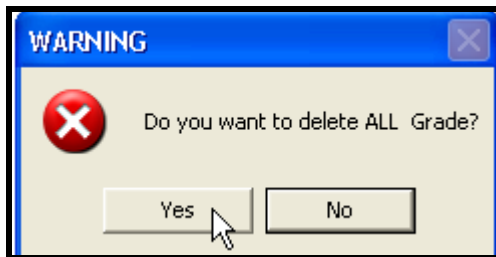
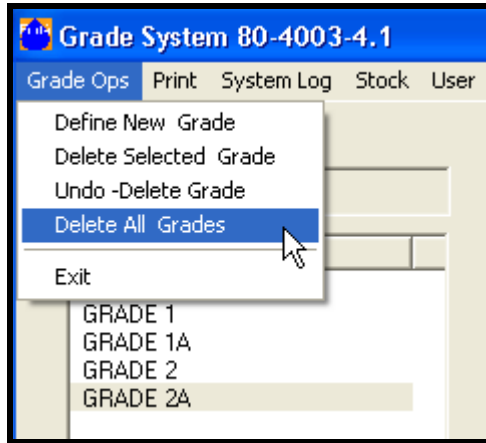
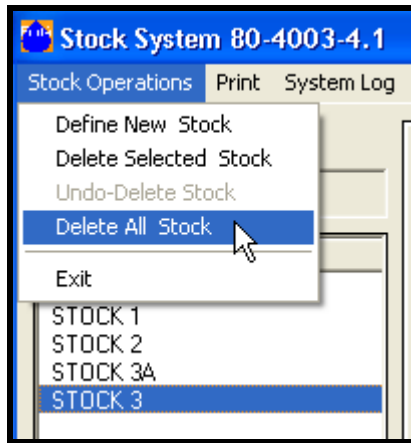
1. Select the Stock Operations drop-down menu from the Stock System window, or select the Grade Ops menu from the Grade system window.
2. Click on the UNDO-DELETE STOCK or UNDO-DELETE GRADE command.
3. When the Undo command is selected the Name box and the name list box update to show that the last deleted item has been restored.
4. NOTE: After deleting a stock or a grade the user may recover the definition by selecting the Undo-Delete command from the Stock Operations or Grade Ops menus any time BEFORE EXITING THE STOCK/GRADE SUBSYSTEM. A deleted stock or grade cannot be recovered once the subsystem has been closed and then re-entered.



8.10 HOW DO I DELETE ALL STOCKS OR GRADES?

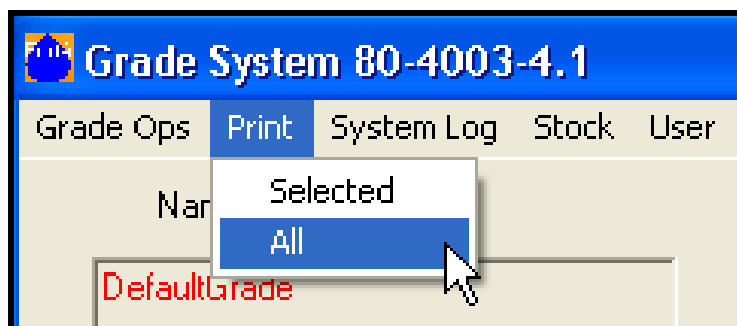
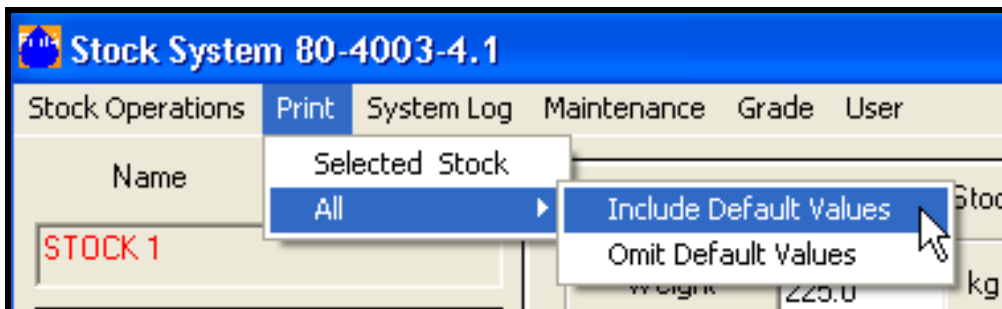
Recommendation: Make a backup of the stock/grade database before using this command. There is no recovery from the Delete All Stocks/Grades commands other than through a restore from a backup file.

1. Exit the Forté moisture measurement system. The Stocks and Grades cannot be deleted while the measurement system is running.
2. The Stock/Grade Subsystem must be running. Go to the Stock System or Grade system window.
3. Select the Stock Operations or grade Ops drop-down menu.
4. Click on the DELETE ALL STOCK or DELETE ALL GRADES command. When the command is selected, a message box will immediately appear asking the user to confirm the Delete All command. If the user selects “Yes”, a second warning box is displayed. If the user answers “Yes” a second time, the Name box and the grade name list box will be updated to show that the selected grades have been deleted.



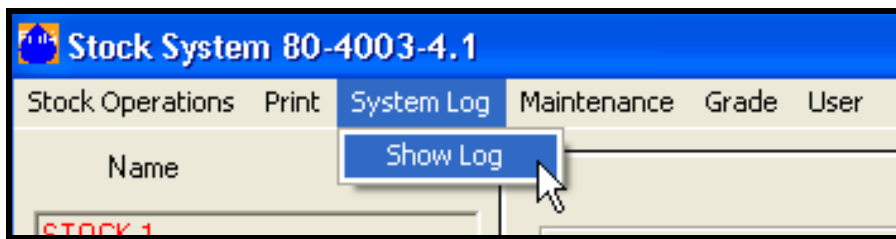
8.11 HOW DO I PRINT A COPY OF THE STOCK/GRADE DATA FILE?

1. Go to the Stock System window.
2. Select the Print drop-down menu from the Stock System window.
3. To print a copy of the currently displayed stock from the Name list box, click on the SELECTED STOCK command. The data in the Parameters box and in the Defaults box is included in the print out.
4. To print a copy of all system stocks, click on the All command. The option to include or omit the Default Values from the printout is available from the All command.
5. To print the grade data, follow the same procedure from the Grade System window.
6. The system will send the data to the default Windows printer.

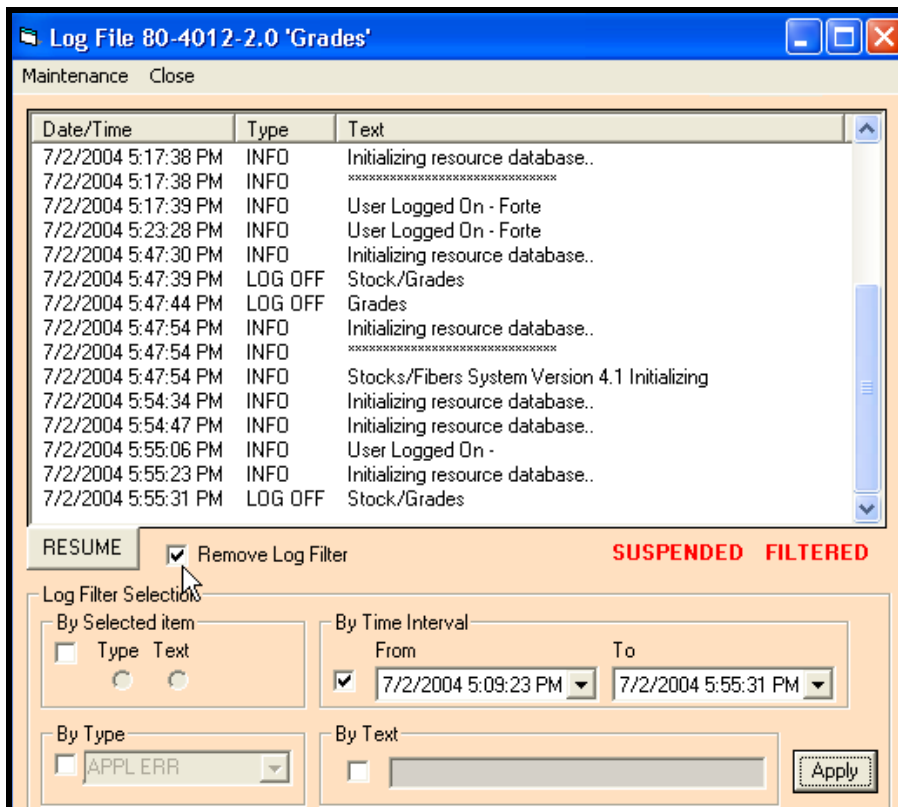


8.12 HOW DO I REVIEW THE STOCK AND GRADES LOG FILE MESSAGES?

1. Go to the Stock System window.
2. Select the System Log drop-down menu.
3. Click on the Show Log command.
4. The Log File "Grades" window is displayed.
5. Clearing and printing options are available from the Maintenance menu.

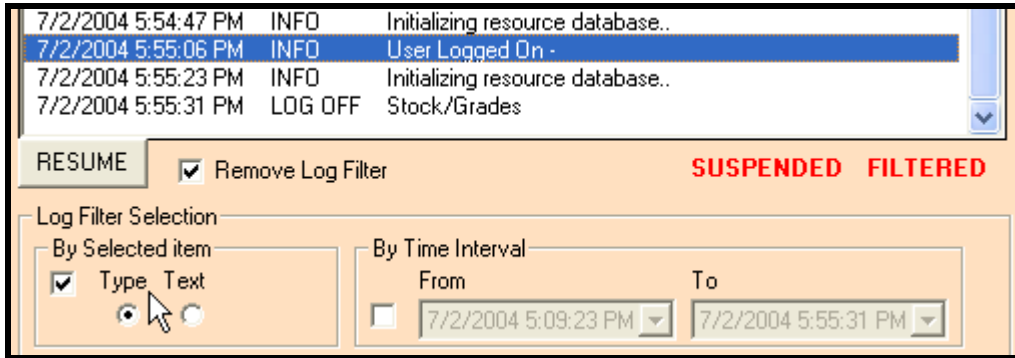


6. Message filtering options are available by selecting the Log Filter check box at the bottom of the window.

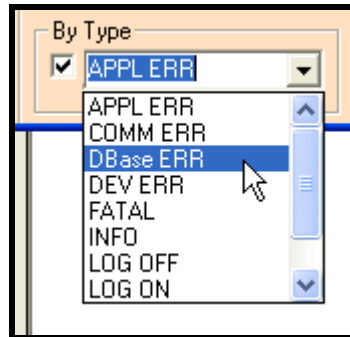


7. There are four types of filtering available to select the messages to be displayed in the listview:

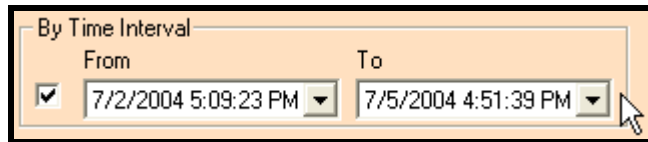
- Selection by message type or text as highlighted in the listview box.



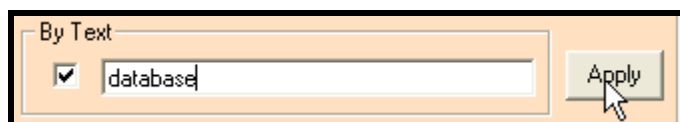
- Selection by message type as selected from a combo box.



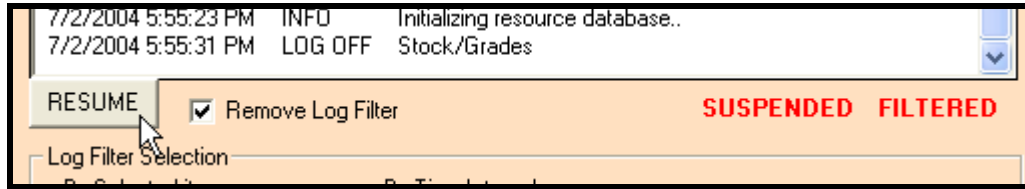
- Selection of messages by time period as selected from two combo boxes.



- Selection of messages that include text as typed into a text box.

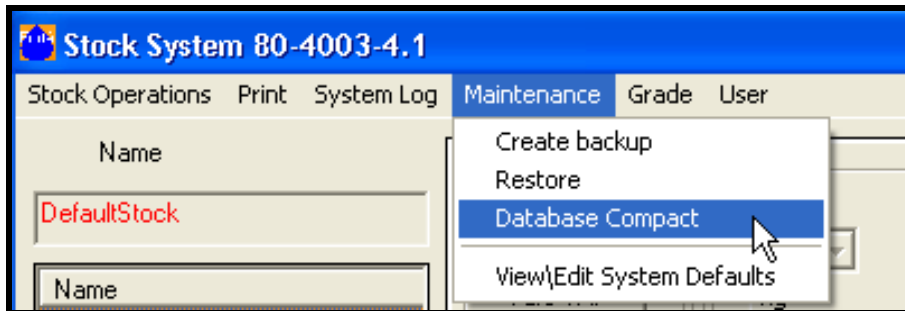


8. The addition of new messages displayed in the Log File listview can be suspended while searching through previous entries by using the Suspend / Resume button.

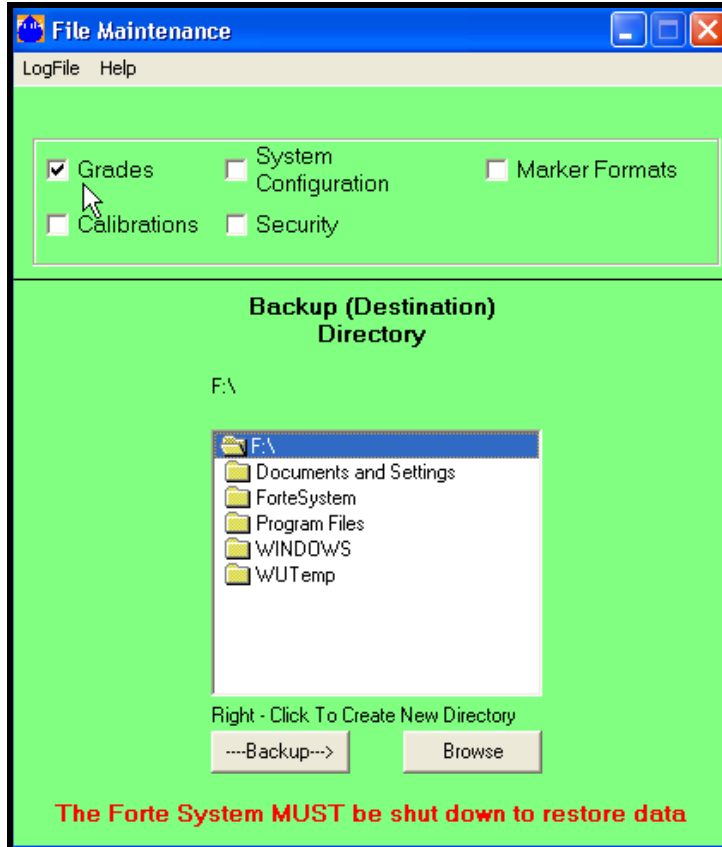


8.13 HOW DO I MAKE A BACKUP OF THE STOCK / GRADES DATABASE?

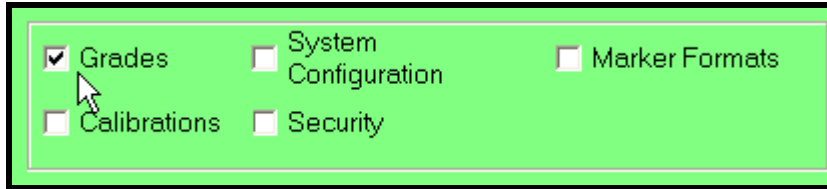
1. Go to the Stock System window.
2. Select the Maintenance drop-down menu. To reduce the backup size, use the Compact command to compact the Stock/Grade database. The database cannot be compacted if the main Forté Measuring System application is running. Compacting is NOT required before creating a backup file.



3. Clicking-on the Create Backup command opens the File Maintenance Window.



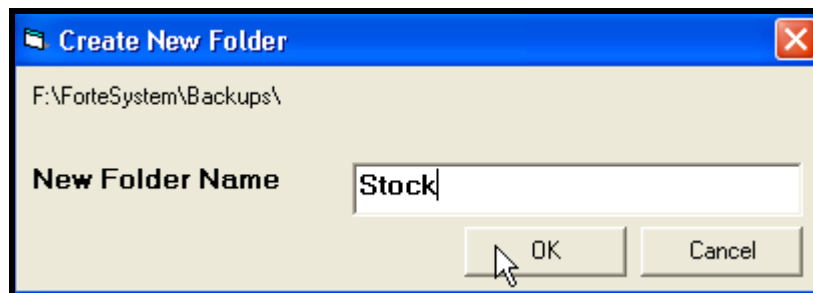
4. Select the Grades check box at the top of the window.



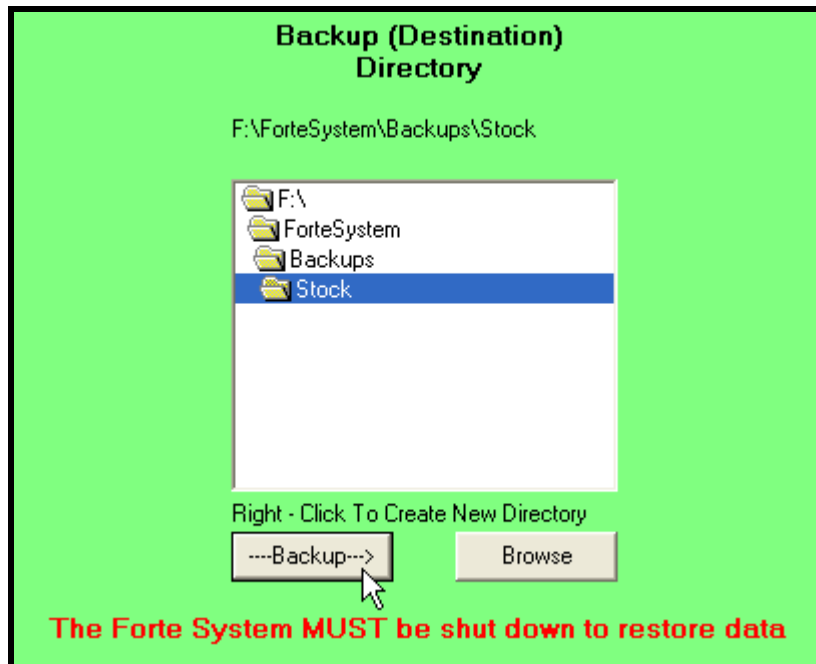
5. Select or create a destination folder for the backup file by using the directory box in the middle of the window and/or the Browse button.



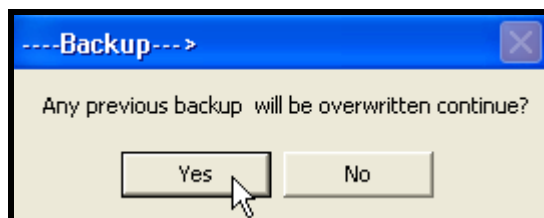
6. Right clicking in the directory listview box also allows the user to name a new backup folder. Enter the new folder name and select OK to continue.



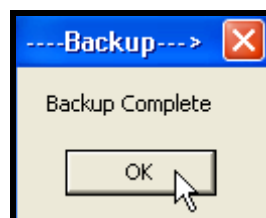
7. Click the Backup button to start the backup.



8. A backup warning box appears. Select "Yes" to continue and overwrite any existing backup in the target directory.

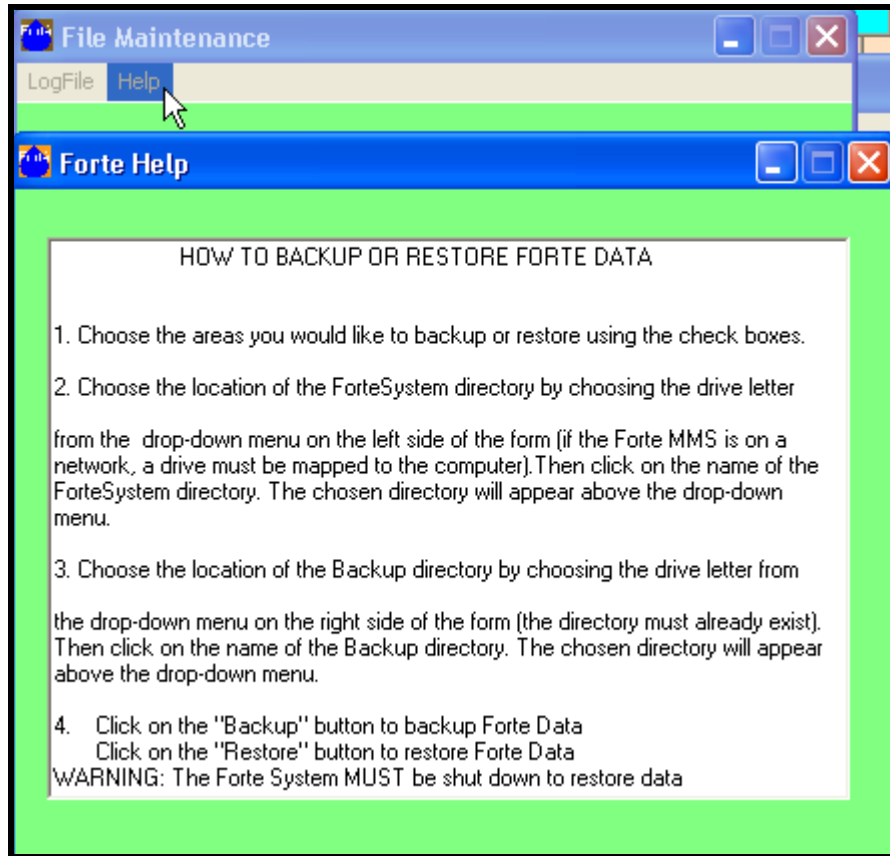


9. When the backup is complete, a message box appears. Click-on the OK button. The backup stock/grades file, PulpGrade.mdb, is now in the backup directory specified for Grades.

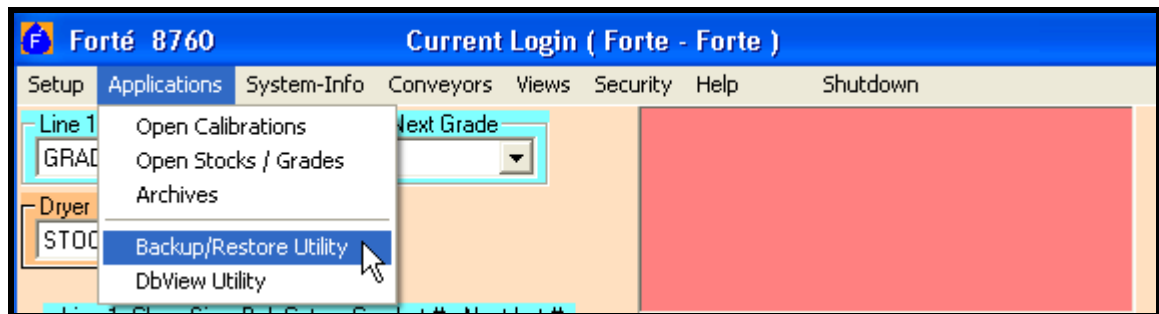


10. Exit from the Maintenance window by using the Windows Close box in the upper right corner of the window.

11. Help is available by using the Help menu command in the File Maintenance window.

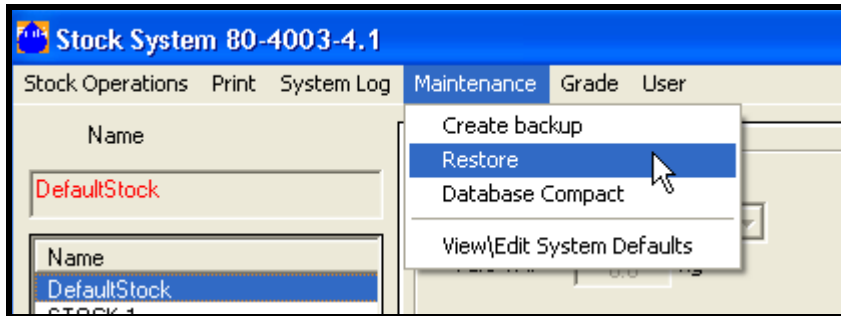


12. The Stock / Grade file can also be backed up by the Backup/Restore Utility command. The command is found in the Applications menu on the Forté Measuring System window.

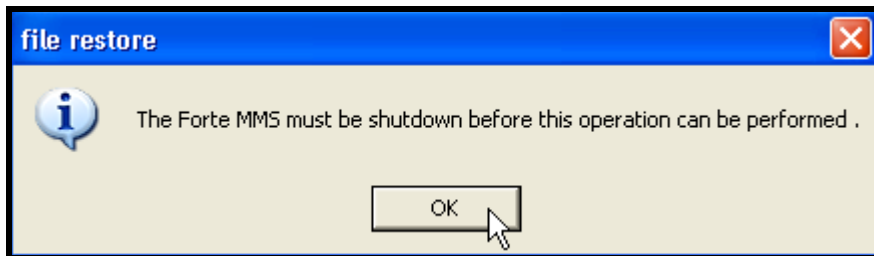


8.14 HOW DO I RESTORE STOCK / GRADE DATA?

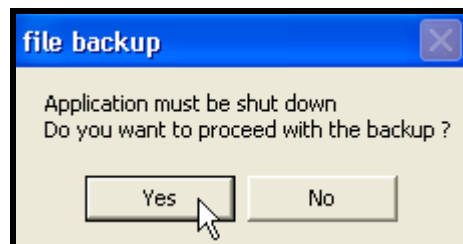
1. Go to the Stock System window.
2. Select the Maintenance drop-down menu and click-on the Restore command.



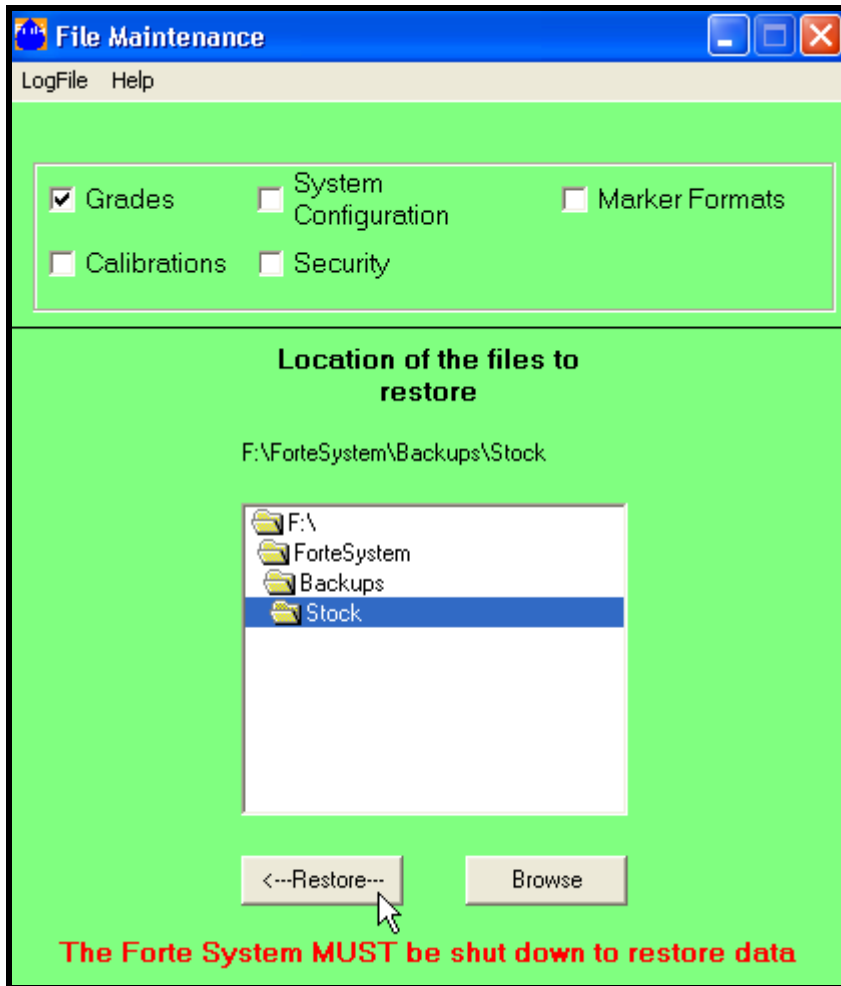
3. If the Forté Measuring System is running, it must be shutdown in order to restore the data correctly. Answer OK in the message box, and then close the main Forté Measuring System application.



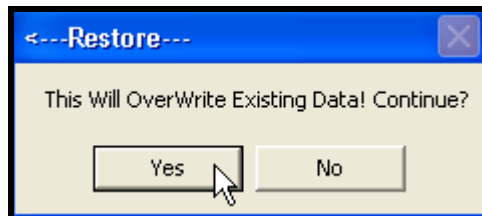
4. To use Restore, the Stock / Grade Subsystem must also be closed. Click-on the Yes button to close the subsystem.



- The Stock System window closes. The File Maintenance window opens. Select Grades and the folder from which the backup will be restored.



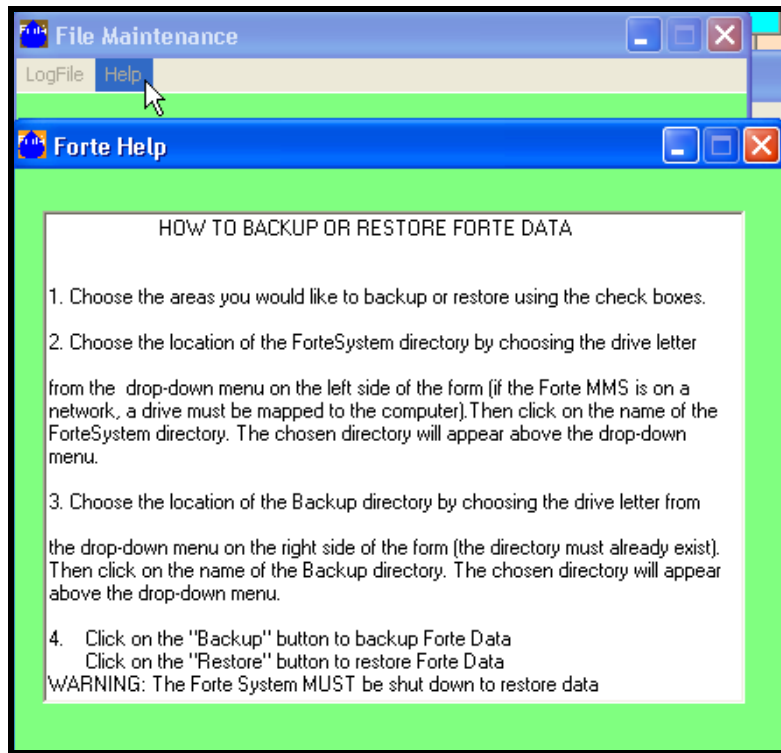
- The Restore command will overwrite any existing calibration data. Answer "Yes" to continue. The PulpGrade.mdb file will be restored to the default location of C:\ForteSystem\Grades.



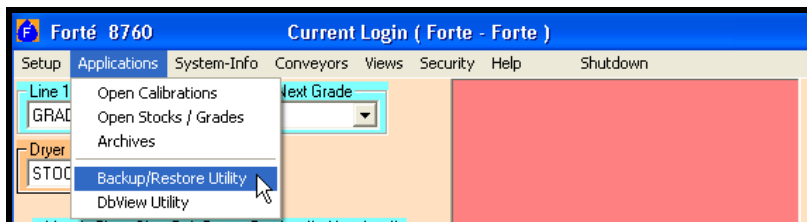
7. Click on the OK button in the Restore Complete message box to finish the restore procedure.



8. Exit from the File Maintenance window by using the Windows Close box in the upper right corner of the window. The main application and Stock System can both be re-started.
9. Help is available by using the Help menu command in the File Maintenance window.



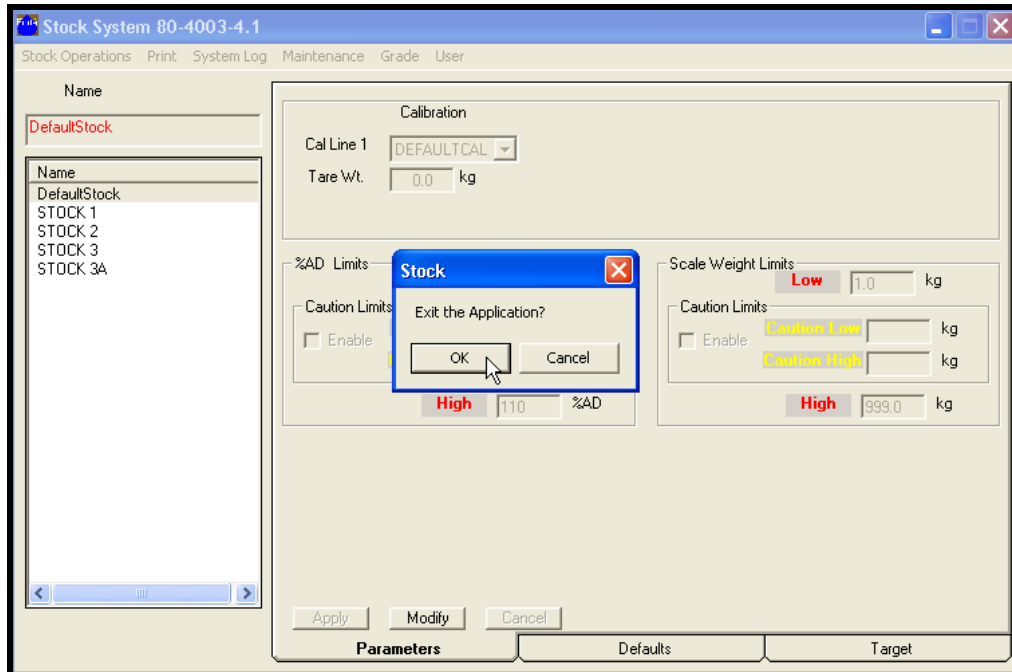
10. The Stock / Grade file can also be restored by the Backup/Restore Utility command. The command is found in the Applications menu on the Forté Measuring System window.



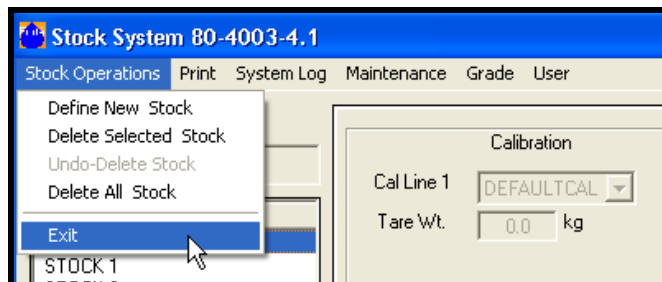
8.15 HOW DO I EXIT THE STOCK / GRADES SUBSYSTEM, SAVING ANY NEW DATA OR EDITS?

NOTE: The Stock and Grade Systems must be closed individually.

1. Go to the Stock System window.
2. Click on the Windows close box in the upper right hand corner of the Stock System window.



3. Another method to close the screen is to select the Exit command from the Stock Operations menu.



4. Follow the same procedure to close the Grade System.
5. When both systems have been closed a prompt will appear asking for confirmation of the exit command. Click on "OK" to exit.

9 TO CONTACT FORTÉ TECHNOLOGY, INC.:

Mailing/Shipping Address:

FORTÉ Technology, Inc.
125 John Hancock Road
Suite 9
Taunton MA, 02780 U.S.A.

Telephone: 1-508-802-9634

Fax: 1-508-824-2085

E-mail: service@forte-tec.com

Internet: www.forte-tec.com